

Chisholm

COURSE GUIDE 2020

TAFE courses to degrees



CHASE YOUR CALLING.

TAFE VICTORIA

1300 244 746 chisholm.edu.au

On campus | Online | Workplace | International

WELCOME

We're pleased that you're thinking about joining us on your education and career path, and hope that this course guide will help you discover why 35,000 students each year choose to study with us.

At Chisholm, we're proud of providing quality and practical education that changes lives and communities, and keeps up with the many rapid changes taking place in the world. We offer a range of qualifications from certificates to degrees, as well as short courses and pathways to skill you, inspire you and prepare you for a lifelong career. Our partnerships with universities, industry and the community give you options, as does our government-funded training, and access to student loans and scholarships for eligible students.

At Chisholm, we're creating education for the future. We hope you'll join us.

**ON CAMPUS. ONLINE.
WORKPLACE. INTERNATIONAL.**



We are fully
government owned



We offer over
300 nationally
recognised courses

CONTENTS

Why Chisholm	1	Courses	
How to apply	2	Art and design	19
Get qualified with us	3	Automotive and logistics	21
Higher education at Chisholm	5	Building trades	23
Study La Trobe degrees at Chisholm	6	Business	26
Our locations	7	Early childhood education and support	29
Learn online and in the workplace	8	Engineering and electronics	31
Apprenticeships and traineeships	9	Hair, beauty and make-up	33
Money matters	11	Health and community services	35
Student Services	13	Horticulture, conservation and landscaping	40
Pathways	17	Hospitality and events	42
		Information technology	44
		Sports, fitness and massage	46
		Training and assessment	48
		Alternatives to secondary school	50
		Employment and further study preparation	55
		Course index	57
		Our endorsements	59
		Stay in touch	60



WHY CHISHOLM?

We're passionate about inspiring and transforming people's lives through quality education and training.

STATE-OF-THE-ART FACILITIES

At Chisholm, we're here to help you gain the qualifications you need to build a lifelong career in your chosen field. Our training across more than 300 courses is focused on giving you job-ready skills. Our courses are designed in close consultation with industry, and offer practical experience and work placements so you'll get plenty of on-the-job training while you study. Whether you learn with Chisholm on campus, in your workplace or online, our skilled and passionate teachers, student support services and world-class facilities will help you gain up-to-date skills and qualifications recognised by employers across the country and even overseas.

THE CHISHOLM ADVANTAGE

- > Skilled, passionate teachers
- > Government-owned education and training
- > One of the largest vocational education and training providers in Victoria
- > TAFE courses to degrees
- > State-of-the-art facilities and equipment
- > Cutting edge, up-to-date training
- > Multiple locations plus online and in the workplace
- > Over 300 nationally recognised courses
- > Flexible study options that work for you
- > Clear pathways to your ideal job or qualification
- > Specialist courses to meet industry needs
- > Practical programs for real job outcomes
- > Learning and support services

2

One of our friendly advisors will advise on your eligibility and help you with the enrolment process.

1

Online:
chisholm.edu.au/apply

Call: **1300 244 746**

In person: at any of our campus locations.

HOW TO APPLY

It's easy to enrol in a TAFE course that's right for you.

For more information, go to **chisholm.edu.au/apply**.

3

Once payment and eligibility are finalised, you're enrolled and ready to begin your course!

We'll contact you with your course start date and other important information.

How our course advisors and career counsellors help you

Our friendly course advisors are here to help you on your career path and can assist you to find, finalise or enrol in your course.

If you're not quite sure which path to take yet, our qualified career counsellors can work with you through your interests and goals to determine suitable career or course options.

And of course, we are always here to answer your questions or have a chat. You can find our course advisors and career counsellors at our campus locations, or at any Open Night or information session.

Further information

For the most up-to-date information, including course listings and outlines, USI and fees, visit **chisholm.edu.au**.

GET QUALIFIED WITH US

At Chisholm, we can offer you full pathways from short courses, to certificates, to degrees. So no matter what your career and life goals are, you can choose the course that suits you.

SHORT COURSES

Whether you want to upgrade your skills, chase an interest or have a taster before committing to a certificate course, we can help with short courses that give you real skills for the real world. To discover our range of short courses, visit chisholm.edu.au/shortcourses.

ENTRY LEVEL QUALIFICATIONS

Foundation courses

Our foundation courses are designed to help you gain valuable language, literacy, numeracy, study and job-ready skills. Our dedicated, experienced teachers will help you develop a tailored learning plan, and support and guide you through your learning pathway.

VET delivered to secondary school students (previously known as VETiS)

If you have your eye on vocational education and training, you can add it to your senior school studies. The VET program counts towards your VCE or VCAL and may count towards your ATAR, and when you complete it successfully you'll have your VCE or VCAL plus an industry certificate.

Victorian Certificate of Education (VCE) and Victorian Certificate of Applied Learning (VCAL)

If you've completed Year 10, you can study your VCE and VCAL with us, and move straight into a career or further study. Our VCE and VCAL are the same certificates you'd get in secondary school, and VCAL also includes an industry qualification. Both programs give you flexibility and a relaxed environment where you're treated like an adult.

PRE-APPRENTICESHIPS

A pre-apprenticeship is a certificate course that helps you experience what it's like to work in a trade before you commit to doing a full apprenticeship. If you do go on to an apprenticeship, it can shorten its study component.

APPRENTICESHIPS AND TRAINEESHIPS

Apprenticeships and traineeships allow you to combine training with full-time or part-time work, so that you learn on the job as well as during class time, while still earning a wage. At Chisholm we're known for our excellent trades training so when you finish your apprenticeship or traineeship, you can hit the ground running.

CERTIFICATES

Our certificate courses can help you start on your career pathway, gain an entry-level position or round out your qualifications. So whether you're just starting or already well on the way to your dream career, a Chisholm certificate could be just what you need.

DIPLOMAS

A diploma course expands your skills and knowledge across a broad range of technical and/or management functions. In many cases, your diploma can be credited towards the first year of a university degree, which means you'll complete your degree sooner.

ADVANCED DIPLOMAS

The advanced diploma is a higher-level course that's designed to provide you with advanced skills and an in-depth knowledge of your chosen field. In many cases your advanced diploma can be credited towards the first years of a university degree.

DEGREES

Your way into a university degree doesn't have to be the traditional way. You can start your journey to higher education with direct entry into our range of bachelor and postgraduate qualifications, or pathway into your degree with a diploma. Most of our degree programs don't require an ATAR. And through our partnership with La Trobe University you can begin your study at Chisholm and earn credit towards a university degree.

GRADUATE CERTIFICATES AND GRADUATE DIPLOMAS

If you're a diploma or degree graduate or have relevant industry experience, and are looking to broaden your skills and complement what you already know, our postgraduate courses can help. Like our degrees, our graduate certificates and diplomas have been developed with industry for real-world, up-to-date skills.



A group of students are sitting around a table, looking at a book and writing in notebooks. They appear to be in a collaborative learning environment.

HIGHER EDUCATION AT CHISHOLM

Your way into a university degree doesn't have to be the traditional way. Our options and pathways mean you can start your journey to higher education with direct entry into our range of bachelor and postgraduate qualifications, or pathway into your degree by springboarding off a diploma.

At Chisholm we offer specialised, industry-specific degrees that give you a unique insight into the way the industry works, as well as creating a professional network. This can help you learn what the industry needs, and boost your employability. All our degrees are fully accredited and governed in the same way as other university degrees and focus on one thing: maximising your employment options.



Industry relevant
degrees



Pathways
to degree
qualifications

Most of our degree programs don't require an ATAR. And through our partnership with La Trobe University, you can also begin your study at Chisholm and earn credit towards a university degree.

At Chisholm, we offer diverse pathway options and tailored academic support, flexible study options across multiple campus locations, the ability for you to collaborate and learn with industry partners, and modern facilities to enhance your learning experience.

Small class sizes, tailored learning spaces and academic support programs mean that you get a bespoke learning experience that takes into account your individual goals and needs. As a graduate, you'll leave with relevant industry skills and experience, ready to launch into your career.

CHISHOLM DEGREES

- > Bachelor of Engineering Technology
- > Bachelor of Community Mental Health, Alcohol and Other Drugs
- > Graduate Certificate in Family Violence
- > Graduate Diploma in Alcohol and Other Drug Addiction Counselling

For more information, visit chisholm.edu.au/highered.

STUDY LA TROBE DEGREES AT CHISHOLM

Our partnership with La Trobe University, one of Australia's leading universities, offers lots of exciting opportunities and allows you to think global while staying local.

La Trobe University has been transforming people and societies for over 50 years and prides itself on putting students at the centre of everything they do. It has been ranked in the top 1.2 per cent of the world's universities by major independent ranking agencies*.

La Trobe degrees at Chisholm offer you specialised degrees that prepare you to work in your chosen industry with great employment options. And with thanks to our locations across Melbourne's south east, you can study close to home. Our partnership also gives you pathways options, where you can complete a diploma course with Chisholm and earn credit towards a specialised degree with La Trobe University. It takes the same time to complete, and is a cost-effective way to complete your degree since your Chisholm qualification allows you work and earn in your chosen field much sooner.



With La Trobe University degrees at Chisholm, a university degree is closer than you think.

For more information, visit chisholm.edu.au/latrobe.

Please note that courses may be subject to change.

* Times Higher Education World University Rankings 2019 | Webometrics Ranking Web of Universities 2019.

LA TROBE DEGREES

- > Bachelor of Sports Coaching and Development
- > Bachelor of Community Services
- > Bachelor of Nursing Enrolled Nurse
- > Bachelor of Early Childhood Education
- > Bachelor of Accounting
- > Bachelor of Information Technology

For more information, visit chisholm.edu.au/highered.





OUR LOCATIONS

On campus. Online. In the workplace.

As one of the largest TAFE institutions in Melbourne's south east, we can offer you many locations to study from, including on campus, online and in the workplace. So whether you want to study near the beautiful beaches of Frankston, in the multicultural hub of Dandenong, in the Health and Education Precinct of Berwick or in the comfort of your own home, we've got you covered.

Our eight locations across Melbourne's south east feature state-of-the-art equipment, world-class facilities, modern learning environments, comprehensive libraries and helpful support services. All campuses are conveniently located, with parking and public transport access.

Find out more about our campus locations and facilities at chisholm.edu.au/locations.

ON CAMPUS

Dandenong

121 Stud Road, Dandenong 3175

Our largest campus, Dandenong has facilities for international and VCE students, manufacturing and robotics centre, building and construction trades centre, hi-tech automotive centre, large library and computer lab, café, patisserie, hair and beauty salon and campus store.

Chisholm @311

311 Lonsdale Street, Dandenong 3175

Situated in the Dandenong CBD, Chisholm @311 is a contemporary, creative space boasting cutting-edge technology.

Frankston

Fletcher Road, Frankston 3199

Our \$75.9 million redevelopment at the Frankston campus features state-of-the-art education and training facilities, including a modern comprehensive library, computer labs, café, student restaurant, massage clinic, hair and beauty salon and trades facilities.

Berwick and Berwick TEC

25 Kangan Drive, Berwick 3806

With an on-site beauty spa, children's services training centre and computer, engineering and electronic centre, Berwick caters to many different streams of education. Berwick also has a fully integrated trade training centre. We share this campus with Berwick TEC, a premier location for VCAL, pre-apprenticeships and apprenticeships. Other facilities include a modern sports centre, gym and fitness rooms, state-of-the-art computer labs and café.

Our new Centre for Health is situated in the heart of the emerging Berwick Health and Education Precinct and features specialised training and simulation laboratories and tailored teaching environments.

Cranbourne

New Holland Drive, Cranbourne 3911

Cranbourne features a modern, large library and study area, computer lab and café as well as world-renowned facilities like our state-of-the-art greenhouses – some of the largest in the southern hemisphere – and the National Water Centre, a \$10 million water industry training facility.

Mornington Peninsula

Boneo Road, Rosebud 3939

Mornington Peninsula boasts all the facilities you'd expect from Chisholm as well as a café, library, on-site restaurant and hair and beauty salon. It's also home to the Southern Peninsula Trade Training Centre.

Bass Coast

Corner Bass Highway and South Dudley Road, Wonthaggi 3995

Servicing Wonthaggi and surrounding communities, Bass Coast focuses on accessible learning options for secondary and tertiary students, as well as school leavers and mature age students.

Springvale

Corner Boulton Street and Springvale Road, Springvale 3171

In the heart of multicultural Springvale, this campus specialises in English language programs.

LEARN ONLINE

Chisholm Online is all about flexibility – studying when and where it suits you, so you can move towards your dream job without sacrificing pay or family time.

Learning online doesn't mean you're alone. Your teacher is with you all the way, and our student engagement team is available seven days a week for help and support.

When you study with Chisholm Online, you'll also have access to all the services available to on-campus students. Best of all, you'll be welcomed into an online community with a network of people just like you.

IN THE WORKPLACE

Workplace training and assessment minimises your off-the-job time and makes it easier to get your qualification. At Chisholm, we deliver nationally recognised courses tailored to your workplace, so you can learn at your work, for your work.

Do your staff need training?

We understand that a business's success depends on the quality of its staff. At Chisholm, our tailored staff training programs are designed to improve your team's skills, increase productivity and meet your specific business needs.

Our flexible training programs are conducted in the workplace and delivered by industry experts and specialist workplace trainers. Importantly, they are designed for minimal operational disruption.

To find out more visit, chisholm.edu.au/workplacetraining.

APPRENTICESHIPS AND TRAINEESHIPS

Our training is built on advice from industry to produce the best quality tradespeople. And it shows, with award-winning apprentices who go on to great careers in a number of high-demand trades.

WHAT IS AN APPRENTICESHIP OR TRAINEESHIP?

Apprenticeships and traineeships allow you to combine formal training and employment so you can earn while you learn. An apprenticeship teaches relevant industry skills, allows you to use state-of-the-art equipment, and gives you the opportunity to network with other like-minded students and colleagues.

Apprenticeships and traineeships combine a contract of training with employment. Some can even be completed while you're still at school; this is called a School Based Apprenticeship or Traineeship. Training happens one day a week or on 'block release'. The best part is you're paid for your time at work, including the time spent in training. When you successfully complete all the units, you gain a nationally recognised qualification.

For more information, visit chisholm.edu.au/apprenticeships.

PRE-APPRENTICESHIPS

Pre-apprenticeships or apprenticeship pathway courses are a great way to introduce yourself to a potential trade or industry before taking the big leap into an apprenticeship or longer-term study. They can also be a great way for you to learn new skills for personal use. Pre-apprenticeship courses can take as little as 11 weeks full time to complete and may reduce your time as an apprentice.

Useful links

- > chisholm.edu.au/open
- > www.australianapprenticeships.gov.au
- > www.aen.org.au
- > www.Linkedin.com
- > www.Seek.com.au
- > www.aatinfo.com.au
- > www.australianapprenticeships.gov.au
- > www.joboutlook.gov.au

Or email skillsandjobs@chisholm.edu.au for further information.



1

Decide on your preferred industry or trade

Find out about the different trade careers available at our Open Nights.

2

Polish your resume and cover letter

Our Chisholm Skills and Jobs Centre can help you.

3

Find an employer

Use some of the useful links on the left to get started.

4

Sign apprenticeship/ traineeship training agreement

The employer must register you with an Australian Apprenticeship Network. Make sure you list Chisholm as your training provider.

5

Commence training

We'll contact you to start the trade component of your apprenticeship or traineeship.

HOW DO I GET AN APPRENTICESHIP?



MONEY MATTERS

Everyone's circumstances are different, and this can affect how much you'll pay for your education at Chisholm.

The course costs in this guide are correct at time of print, but prices may change. For up-to-date course fees, please check the relevant course page at chisholm.edu.au.

COURSE COSTS

Course costs depend on the type of student you are:

- > eligible for Victorian and Australian Government subsidised training
- > eligible for concession rates on Victorian and Australian Government subsidised training
- > required to pay the full fees for tuition and other costs.

Our friendly course advisors will be able to advise which of these three categories you belong to.

WHAT DO COURSE FEES COVER?

Our annual course costs are made up of:

- > a tuition fee (for course delivery)
- > a student services fee (for services and facilities)
- > a materials fee (for resources and equipment where applicable).

Some courses use more resources than others and this may be reflected in the cost.

Fees must be paid on the day of enrolment. You may, however, be eligible for assistance with your tuition fees that can defer the payment through a government loan. These loans are available if you are studying eligible diplomas and above. Payment plans may also be available.

Please note that unless you are a higher education student, you are not enrolled in a course until you've paid your fees.



Speak with us
about your
finance options



Full details on
your finance
options online

FEE PAYMENT OPTIONS

There are several ways you can pay for your fees, including paying over time, at a later date or in one lump sum. There are government loan options available to eligible students for many courses too. For more information, visit chisholm.edu.au/helpwithfees.

VET Student Loans

With a VET Student Loan you can study now and pay later. An Australian Government initiative, these loans help eligible students pay for their tuition fees when studying for a VET Student Loan-eligible diploma or advanced diploma.

Eligible students studying VET Student Loan-eligible graduate certificates and graduate diplomas may also qualify for a VET Student Loan. To be considered for a VET Student Loan you must either be an Australian or New Zealand citizen, or hold a Permanent Humanitarian Visa and be usually resident in Australia.

A VET Student Loan creates a debt that must be repaid to the Commonwealth. Repayments are taken out of what you earn through the tax system when you begin to earn more than the minimum repayment threshold. You can make a voluntary payment at any time.

FEE-HELP

This Australian Government loan scheme helps eligible students to pay their tuition fees when studying a bachelor degree or FEE-HELP eligible graduate certificates or graduate diplomas. You don't have to repay the loan until your income is above the minimum repayment threshold for compulsory repayment, although you can make voluntary repayments at any time.

Payment plans

We offer payment plans for most courses at certificate and diploma levels, or higher qualifications that are not eligible for a VET Student Loan. Tuition costs are spread over the year with weekly, fortnightly or monthly direct debit payments. We work in partnership with Debitsuccess, the largest direct debit provider in Australasia, to set up a payment plan that works for you.

Financial assistance

If you hold a current Health Care, Pensioner Concession or Veterans' Gold Card, or are named on the card as a dependent spouse or child, you may be eligible for a tuition fee concession. This applies to all Victorian Government subsidised courses except diplomas and above.

Free TAFE for priority courses

This Victorian Government initiative covers your tuition fees if you commence a selected course at Chisholm in 2020 and you're eligible for government subsidy. Find out more at chisholm.edu.au/freetafe.

Aboriginal and Torres Strait Islanders

Australian Aboriginal and Torres Strait Islanders are eligible for a concession on tuition and student services fees for any level of Victorian Government subsidised course.

Skills First

Skills First funding is a Victorian Government subsidy that makes training more affordable. You could be eligible for a government subsidised training place, depending on your age, education history, and citizenship or residency status. If you meet the eligibility criteria, the Victorian Government may subsidise your training, reducing what you need to pay.

Caroline Chisholm Education Foundation

The Caroline Chisholm Education Foundation helps support students who, due to financial hardship, might otherwise not have access to training and education. To find out more, visit chisholm.edu.au/CCEF.



Honest, unbiased
advice just for you

STUDENT SERVICES

WE'RE HERE TO HELP

As a Chisholm student, you can access a variety of support services that will enhance your study experience and help you to complete your training successfully. For more information about any of our services, visit chisholm.edu.au/studentservices.

STUDENT SERVICES

Apprenticeship support

Apprenticeship Support Officers provide free and confidential advice and assistance with work, training or personal issues.

Counselling services

Experienced and professionally qualified counsellors can provide you with free support, advice or referrals to specialist providers.

Client services

Our staff can assist you with course information, application and enrolment procedures, student ID cards and more.

Disability support

We provide support for students with diagnosed disabilities and medical or mental health conditions. Contact a disability officer as early as possible before your course starts to organise the help you need.

Parking

We provide free student parking across all campuses (except Chisholm @311) on display of our issued parking permit.

Career services

Our experienced career counsellors can help you with:

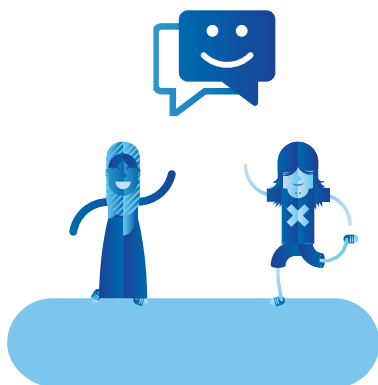
- > job hunting
- > interview skills
- > placement preparation
- > career planning, career management, pathways, industry knowledge, VTAC, action plans and career profile assessments
- > job application assistance including resumes, selection criteria and cover letters.

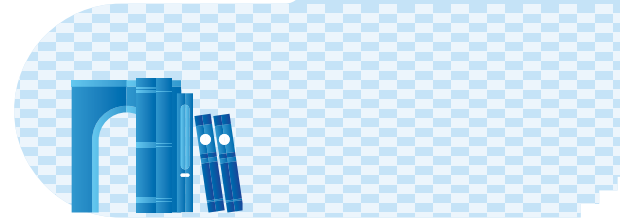
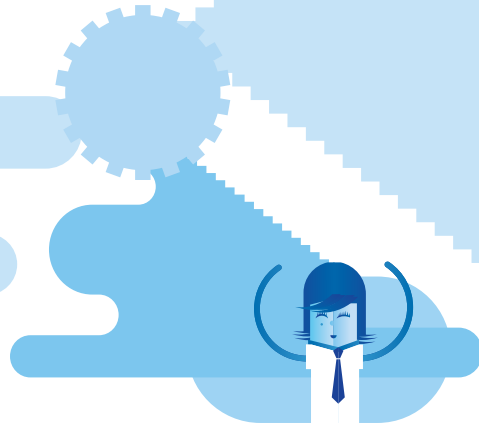
Library and information centre

Our friendly staff can help you find information and connect you with resources and services to support your study. For opening times, visit library.chisholm.edu.au.

Learning skills

If you want to improve your study skills, our learning skills staff can assist you with writing reports and essays, referencing and bibliographies, exams and test preparation, and presentation skills. Connect with learning skills support in your campus library.





Student experience

We provide a range of experiences including campus events, competitions, giveaways, incentives and discounts. You'll have access to student-run salons, restaurants and massage clinics – all at discounted prices. You also have the opportunity to join social clubs and tours that will help you integrate into the Chisholm community and enrich your journey with us.

Financial guidance

We provide access to individualised financial guidance, including:

- > information on support if you're experiencing financial hardship
- > help with scholarship application and referrals to external support services
- > budgeting and financial literacy information.

Free, online study support

Studiosity provides online personal study support with assignment and study questions, and a 24/7 essay review service via our Student Support portal or the Studiosity mobile app.

International Student Programs

Our International Student Programs staff can help you with everything from course transfer advice to change of visa status. Visit chisholm.edu.au/international for more information.

Indigenous support

Our Koorie Liaison Officer (KLO) offers all Aboriginal and Torres Strait Islander students guidance with applications (including scholarship applications), course advice and cultural support. We can also assist you to connect with community. Our KLO is here to support you during your time at Chisholm.



You can talk to us



Keep up to date at
facebook.com/ChisholmInstitute

FREE TAFE

COURSES

Chisholm

TAFE VICTORIA



Gain the skills you need to launch into a career in one of Victoria's fastest growing industries with a free TAFE course at Chisholm. To find out if you're eligible, visit chisholm.edu.au/freetafe or call **1300 244 746**.

TAFE courses to degrees

Eligibility criteria apply. Free TAFE on selected courses only. Other fees and charges may apply. See chisholm.edu.au/freetafe.

**Enrol now
chisholm.edu.au**

CHASE YOUR CALLING.



Chisholm

OPEN NIGHTS

Open Nights take place at Chisholm locations throughout the year. Drop by to learn more about what we have to offer you.
Visit our website for dates and locations.

chisholm.edu.au/open

CHASE YOUR CALLING.

PATHWAYS

If you want to become qualified for your dream job or your chosen industry, a pathway can help make your career dream a reality, sooner. A pathway is a staged learning process, where you can customise your qualifications to your needs, enhance your study experience and help you to complete your training successfully.



WHY DO A PATHWAY?

- > Hands on – more skills towards employment
- > Gives you multiple qualifications in the same time as a degree
- > Cost effective – because you can work in your chosen field from your first certificate, you can earn while you learn
- > No ATAR required
- > Builds your employment network
- > Flexible and customisable to your life and career goals
- > Agile, up-to-date training
- > Multiple entry and exit points
- > The goal is employment – not just a degree.



CHASE ART AND DESIGN



Make your mark on the world with art and design

The creative and creative is vast, encompassing varied disciplines including graphic design, screen and media, visual arts, floristry, interior design, tattooing, and even art therapy, which marries an interest in arts with an interest in health. At Chisholm, we offer a wide range of art, design, photography, and screen and media courses from short courses and certificates, all the way through to diploma and advanced diploma qualifications. So whether you want to dip your toe into a creative pursuit, follow an interest, pursue your next creative challenge or turn your passion into your career, we're here to help you create your art – and your future.

About 60,000 people work in the creative and design industry*.

Follow an interest into a creative life – or a creative career.

No need to be an expert before doing an art and design course at Chisholm.

* www.joboutlook.gov.au, February 2019

GAMES DEVELOPMENT

Location

Certificate IV In Digital Media Technologies / Certificate IV In Digital And Interactive Games (ICT40815) (ICT40915) Games Programming Entry Requirements: No formal requirements. Duration: 1 year full time	F
Diploma Of Digital Media Technology / Diploma Of Digital And Interactive Games (ICT50915) (ICT50215) Entry Requirements: Certificate IV in Digital Media Technologies or Certificate IV in Digital and Interactive Games or relevant industry experience with interview. Duration: 1 year full time, 2 years part time	F

GRAPHIC DESIGN

Certificate II In Printing And Graphic Arts (General) (ICP20115) Entry Requirements: Attendance at an interview, No formal requirements. Duration: 23 weeks part time	D, F
Certificate IV In Design (CUA40715) Entry Requirements: Attendance at an information session/portfolio interview. Duration: 1 year full time	D, F
Diploma Of Graphic Design (CUA50715) Entry Requirements: Folio can include digital art, typography, design, illustration, photography, Students require an interview, and are requested to bring a portfolio of at least 8 images that relate to the chosen area of study completed within the past two years. Duration: 1 year full time, 2 years part time	D

MULTIMEDIA AND WEB DEVELOPMENT

Certificate IV In Web-based Technologies (ICT40315) Entry Requirements: Mature age entry, Some knowledge of software is essential, Year 12 (VCE) or an equivalent qualification. Duration: 1 year full time, 2 years part time	F, W
--	------

PHOTOGRAPHY AND VIDEOGRAPHY

Certificate IV In Photography And Photo Imaging (CUA41115) Entry Requirements: Attendance at an information session/portfolio interview. Duration: 1 year full time	D, F
Diploma Of Photography And Photo Imaging CUA50915 Entry Requirements: Folio can include digital art, typography, design, illustration, photography, Students require an interview, and are requested to bring a portfolio of at least 8 images that relate to the chosen area of study completed within the past two years. Duration: 1 year full time, 2 years part time	D

VISUAL ARTS

Certificate IV In Visual Arts CUA41315 Entry Requirements: Attendance at an information session/portfolio interview. Duration: 1 year full time	F
Diploma Of Visual Arts CUA51115 Fine Arts Entry Requirements: Folio can include digital art, typography, design, illustration, photography, Students require an interview, and are requested to bring a portfolio of at least 8 images that relate to the chosen area of study completed within the past two years. Duration: 1 year full time, 2 years part time	F
Diploma Of Visual Arts CUA51115 Illustration Entry Requirements: Folio can include digital art, typography, design, illustration, photography, Students require an interview, and are requested to bring a portfolio of at least 8 images that relate to the chosen area of study completed within the past two years. Duration: 1 year full time, 2 years part time	F

Locations:

@311 Lonsdale St Dandenong, B Berwick, BC Bass Coast, BT Berwick TEC, C Cranbourne, D Dandenong, F Frankston, MP Mornington Peninsula, O Online, S Springvale, W Workplace



CHASE AUTOMOTIVE AND LOGISTICS



Get under the hood and discover a career that will get you on the move.

Does knowing what's under the bonnet fascinate you? Ever wonder how fast that vehicle could do a quarter mile? Did you play with Tonka trucks, or just enjoy tinkering with tools and finding out how things work? Then a career in automotive or logistics might just be for you. There's more to automotive than cars and engines, and you can choose from many disciplines, from mobile plant and marine mechanic apprenticeships, to forklift technology, and heavy vehicle/ diesel mechanics. Whatever the course, with us you can learn skills that you can use both at home and in the workplace.

**Around 23,000
job openings* in
automotive and
logistics predicted in
the next few years.**

**Skills you can take
around Australia –
and the world.**

**A Certificate IV
in Automotive
Management along with
your course can help
you set up and run your
own business.**

* www.joboutlook.gov.au, February 2019

AUTOMOTIVE

Location

Certificate II In Automotive Air Conditioning Technology (AUR20218) Entry Requirements: Recommended you have completed Year 10 or equivalent, with good reading, writing and communication skills. Duration: 8 weeks full time	D
Certificate II In Automotive Body Repair Technology (AUR20916) Preapprenticeship Entry Requirements: Recommended you have completed Year 10 or equivalent, with good reading, writing and communication skills. Duration: 10 weeks full time	D
Certificate II In Automotive Servicing Technology (AUR20516) Preapprenticeship Entry Requirements: Recommended you have completed Year 10 or equivalent, with good reading, writing and communication skills. Duration: 10 weeks full time	D, F
Certificate III In Automotive Body Repair Technology (AUR32116) Apprenticeship Entry Requirements: Apprentices must have a Registered Training Agreement with their employer, Completed Year 10 or equivalent with good reading, writing and communication skills. Duration: 3 years part time	D, W
Certificate III In Automotive Refinishing Technology (AUR32416) Apprenticeship Entry Requirements: Apprentices must have a Registered Training Agreement with their employer, Completed Year 10 or equivalent with good reading, writing and communication skills. Duration: 3 years part time	D, W
Certificate III In Heavy Commercial Vehicle Mechanical Technology (AUR31116) Apprenticeship Entry Requirements: Apprentices must have a Registered Training Agreement with their employer, Completed Year 10 or equivalent with good reading, writing and communication skills. Duration: 3 years part time	D, W
Certificate III In Light Vehicle Mechanical Technology (AUR30616) Apprenticeship Entry Requirements: Apprentices must have a Registered Training Agreement with their employer, Completed Year 10 or equivalent with good reading, writing and communication skills. Duration: 3 years part time	D, F, W
Certificate III In Mobile Plant Technology (AUR31216) Apprenticeship Entry Requirements: Apprentices must have a Registered Training Agreement with their employer, Completed Year 10 or equivalent with good reading, writing and communication skills. Duration: 3 years part time	D, W
Certificate IV in Automotive Management (AUR40116) Entry Requirements: Employed in the industry. Duration: 6 months part time	D, W

LOGISTICS

Certificate III in Warehousing Operations (TLI31616) Entry Requirements: Recommended you have completed Year 10 or equivalent, with good reading, writing and communication skills. Duration: 2 years part time	W
Diploma Of Logistics (TLI50415) Entry Requirements: Mature age or relevant industry experience, Year 12 (VCE) or an equivalent qualification. Duration: 9 months part time	D

Locations:

@311 Lonsdale St Dandenong, B Berwick, BC Bass Coast, BT Berwick TEC, C Cranbourne, D Dandenong, F Frankston, MP Mornington Peninsula, O Online, S Springvale, W Workplace



CHASE BUILDING TRADES

Trade up to a hands-on career with a future

Do you ever wonder how things are constructed, how water gets from the hot water system to your shower, or how with the flick of switch you can light up a room? Or do you love working with tools to create beautiful things or renovate and refurbish? Then a career in the building trades might be for you. Whether you want to get into bricklaying, building and carpentry, building design, cabinetry and furniture making, electrical or plumbing, at Chisholm we have the course that will get you there.

Strong to very strong jobs growth predicted in building and infrastructure*.

Skills you can take around Australia – and the world.

Our courses feature community projects for valuable real-world experience.

* www.joboutlook.gov.au, April 2019

BRICKLAYING

Location

Certificate II In Building And Construction Pre-apprenticeship (22338VIC) Bricklaying Entry Requirements: Recommended completion of Year 10 but not essential. Duration: 10 weeks full time	BT
Certificate III In Bricklaying / Blocklaying (CPC30111) Apprenticeship Entry Requirements: Apprentices must have a Registered Training Agreement with their employer, Attendance at an interview prior to enrolment. Duration: 3 years part time	BT, W

BUILDING AND CONSTRUCTION

Certificate II in Building and Construction Pre-apprenticeship (22338VIC) Carpentry Entry Requirements: Recommended completion of Year 10 but not essential. Duration: 10 weeks full time	BT, D, F
Certificate II in Construction Pathways (CPC20211) Entry Requirements: No formal requirements. Duration: 13 weeks full time	MP
Certificate III In Carpentry (CPC30211) Apprenticeship Entry Requirements: Apprentices must have a Registered Training Agreement with their employer. Duration: 3 year part time	B, D, F, MP, W
Certificate III In Carpentry And Joinery (CPC32011) Apprenticeship Entry Requirements: Apprentices must have a Registered Training Agreement with their employer. Duration: 3 years part time	D, F, W
Certificate III in Construction Waterproofing (CPC31411) Entry Requirements: No formal requirements. Duration: 7 months part time	F
Certificate IV In Building And Construction (Building) (CPC40110) Entry Requirements: Good literacy and numeracy skills, Year 10 or equivalent, or mature age with relevant work experience. Duration: 6 months full time, 1 year part time	O
Certificate IV In Building And Construction (Building) (CPC40110) Entry Requirements: Completed Year 10 or equivalent, Good literacy and numeracy skills, Mature age entry. Duration: 1 year part time	D, F
Diploma Of Building And Construction (Building) (CPC50210) Entry Requirements: Mature age entry, Suitable literacy, numeracy, comprehension and computer skills, Year 12 (VCE) or an equivalent qualification. Duration: 1.5 years full time	F

BUILDING DESIGN

Certificate IV In Nathers Assessment (CPP41212) Entry Requirements: Completed Year 10 or equivalent, Good reading, writing and numeracy skills, Mature age entry. Duration: 1 year part time	@311
Advanced Diploma of Building Design (Architectural) (22477VIC) Entry Requirements: Mature age entry, Suitable literacy, numeracy, comprehension and computer skills, Year 12 (VCE) or an equivalent qualification. Duration: 2 years full time, 5 years part time	@311, F

CABINETRY AND FURNITURE MAKING

Certificate II In Furniture Making (MSF20313) Preapprenticeship Entry Requirements: No formal requirements. Duration: 10 weeks full time	D, F
Certificate III In Cabinet Making (MSF31113) Apprenticeship Entry Requirements: Apprentices must have a Registered Training Agreement with their employer. Duration: 1 year full time, 3 years part time	D, F, W

Locations:

@311 Lonsdale St Dandenong, B Berwick, BC Bass Coast, BT Berwick TEC, C Cranbourne, D Dandenong, F Frankston, MP Mornington Peninsula, O Online, S Springvale, W Workplace

PLUMBING

Location

Certificate II In Plumbing (22304VIC) Preapprenticeship Entry Requirements: Completed Year 10 or equivalent. Duration: 10 weeks full time	BT, D, F
Certificate III In Plumbing (CPC32413) Apprenticeship Entry Requirements: Applicants must be 15 years and over to enrol in this course, Apprentices must have a Registered Training Agreement with their employer. Duration: 3 years part time	B, D, F
Certificate IV In Plumbing And Services (CPC40912) Entry Requirements: Certificate III in Plumbing or equivalent, Good literacy and numeracy skills. Duration: 6 months full time, 9 months part time	O
Certificate IV In Plumbing And Services (CPC40912) Entry Requirements: Certificate III in Plumbing or equivalent. Duration: 2 years part time	D, F

Locations:

@311 Lonsdale St Dandenong, **B** Berwick, **BC** Bass Coast, **BT** Berwick TEC, **C** Cranbourne, **D** Dandenong, **F** Frankston, **MP** Mornington Peninsula, **O** Online, **S** Springvale, **W** Workplace

Choose business as the first step to endless career pathways.

Whether you have ambitions of becoming a corporate high flyer, entrepreneur or bookkeeper, working in a start-up, holding a managerial position or developing your leadership and finance skills, a business course from Chisholm will give you what you need to help you succeed: not just with the skills and knowledge you need to perform the job but also to be successful in your long-term career. The business sector is one of the broadest and most flexible, so when you choose business, you'll have endless options in front of you. And with so many options, we can help you plan a pathway from where you are now to where you want to be.

Around 850,000 job openings* in our Business delivery areas predicted in the next few years.

Over 50 courses available for you to choose from.

Opportunities to follow a full pathway from certificate to degree.

ACCOUNTING

Location

Certificate IV In Accounting And Bookkeeping (FNS40217) Entry Requirements: Good literacy and numeracy skills, No formal requirements. Duration: 6 months full time, 1 year part time	O
Certificate IV In Accounting And Bookkeeping (FNS40217) Entry Requirements: No formal requirements. Duration: 6 months full time, 1 year part time	BC, B, D, F, MP, S
Diploma Of Accounting (FNS50217) Entry Requirements: Completion of either FNS40615 Certificate IV in Accounting (or equivalent) OR FNS40215 Certificate IV in Bookkeeping (or equivalent). Alternatively completion of the FNSSS00014 Accounting Principles Skill Set. Duration: 6 months full time, 1 year part time	O
Diploma Of Accounting (FNS50217) Entry Requirements: Completion of either FNS40615 Certificate IV in Accounting (or equivalent) OR FNS40215 Certificate IV in Bookkeeping (or equivalent). Alternatively completion of the FNSSS00014 Accounting Principles Skill Set. Duration: 6 months full time, 1 year part time	B, D,
Advanced Diploma Of Accounting (FNS60217) Entry Requirements: Completion of the following: units comprising of the FNS00014 Accounting Principles skill set plus units comprising FNS00015 Advanced Accounting Principles skill set, or FNS50215 Diploma of Accounting, OR FNS50217 Diploma of Accounting. Duration: 6 months full time, 1 year part time	D
Bachelor Of Accounting (LBCD) La Trobe University Partnership ● Entry Requirements: For more information on entry requirements for La Trobe University, please refer to www.chisholm.edu.au/bacheloraccounting . Duration: 2 years full time or part-time equivalent	@311

BUSINESS ADMINISTRATION

Certificate III In Business (BSB30115) Traineeship Entry Requirements: Good written and verbal communication skills. Duration: 1 year full time	W
Certificate III In Business Administration (Education) (BSB30915) Entry Requirements: Demonstrated verbal, communication, literacy and computer skills. Duration: 5 months full time, 1 year part time	D
Certificate III In Business Administration (BSB30415) Traineeship Entry Requirements: Good written and verbal communication skills. Duration: 1 year full time	W
Certificate III In Business Administration (Education) (BSB30915) Traineeship Entry Requirements: Demonstrated verbal, communication, literacy and computer skills. Trainees must have a Registered Training Agreement with their employer. Duration: 1 year full time	W
Certificate III In Business Administration (Medical) (BSB31115) Traineeship Entry Requirements: Good language, literacy and computer skills. Duration: 5 months full time, 1 year part time	W
Certificate IV In Business (BSB40215) Medical Administration Entry Requirements: Good language, literacy and computer skills. Duration: 5 months full time, 1 year part time	D, F W
Certificate IV In Business (BSB40215) Victorian School Business Managers Program. Entry Requirements: Good language, literacy and computer skills Duration: 1 year full time	C
Certificate IV In Business (BSB40215) General Administration. Entry Requirements: Good language, literacy and computer skills Duration: 5 months full time, 1 year part time	D, F W
Diploma Of Business Administration (BSB50415) Entry Requirements: Certificate IV in Business Administration or equivalent qualification preferred. Recommended you have completed Year 12 (VCE) or equivalent, or are of mature age with relevant industry experience. Strong written, oral communication and computer skills. Duration: 6 months full time, 9 months part time	O
Diploma Of Business Administration (BSB50415) Traineeship Entry Requirements: Certificate IV in Business Administration or equivalent qualification preferred. Sound written and verbal communication skills. Duration: 1 year full time	W

BUSINESS MANAGEMENT

Location

Certificate III In Micro Business Operations (BSB30315) Entry Requirements: Meet Department of Employment guidelines for New Enterprise Incentive Scheme. Duration: 6 weeks full time	BC, B, F
Certificate IV In Leadership And Management (BSB42015) Entry Requirements: Mature age or relevant industry experience, Year 12 (VCE) or an equivalent qualification. Duration: 6 months full time	D, W
Diploma Of Business (BSB50215) Entry Requirements: Mature age with relevant industry experience, Year 12 (VCE) or an equivalent qualification. Duration: 6 months full time, 9 months part time	O
Diploma Of Business (BSB50215) Entry Requirements: No formal requirements, Relevant industry experience preferred. Duration: 6 months full time, 1 year part time	D, W
Diploma Of Human Resources Management (BSB50618) Entry Requirements: Good language, literacy and computer skills, Relevant industry experience preferred. Duration: 6 months full time, 9 months part time	O
Diploma Of Human Resources Management (BSB50618) Entry Requirements: No formal requirements, Relevant industry experience preferred. Duration: 6 months full time, 1 year part time	D
Diploma Of Leadership And Management (BSB51918) Entry Requirements: Mature age entry, Relevant industry experience preferred, Year 12 (VCE) or an equivalent qualification. Duration: 6 months full time, 1 year part time	D, W
Diploma Of Project Management (BSB51415) Entry Requirements: Mature age with relevant industry experience. Duration: 6 months part time	C
Diploma Of Hospitality Management (SIT50416) Entry Requirements: Certificate IV in Hospitality. Duration: 11 months full time, 3 years part time	D
Advanced Diploma Of Business (BSB60215) Entry Requirements: Employed in industry for a minimum of 18 months in a supervisory role. Duration: 9 months part time	D
Advanced Diploma Of Leadership And Management (BSB61015) Entry Requirements: Diploma of Leadership and Management or equivalent is preferred, or substantial industry experience. Duration: 9 months part time	D
Advanced Diploma Of Management (Human Resources) (BSB60915) Entry Requirements: Employed in industry for a minimum of 18 months in a supervisory role. Duration: 9 months part time	D

REAL ESTATE

Certificate IV In Property Services (Real Estate) (CPP40307) Entry Requirements: Training for Agent's Representative Program. Duration: 10 months part time	C
---	---

RETAIL AND SERVICE

Certificate III In Community Pharmacy (SIR30116) Entry Requirements: Good literacy and numeracy skills. Duration: 6 months full time	D
Certificate III in Retail (SIR30216) Traineeship Entry Requirements: Year 10 minimum. Duration: 23 weeks full time, 45 weeks part time	W

WORK HEALTH AND SAFETY, WORK SAFETY

Certificate IV In Work Health And Safety (BSB41415) Entry Requirements: Suitable literacy, numeracy, comprehension and computer skills. Duration: 6 months part time	B, C, F
Diploma Of Work Health And Safety (BSB51315) Entry Requirements: All core units in BSB41415 Certificate IV in Work Health and Safety or equivalent competencies. Duration: 6 months part time	C, W

Locations:

@311 Lonsdale St Dandenong, B Berwick, BC Bass Coast, BT Berwick TEC, C Cranbourne, D Dandenong, F Frankston, MP Mornington Peninsula, O Online, S Springvale, W Workplace



CHASE EARLY CHILDHOOD EDUCATION AND SUPPORT

Inspire minds, develop future generations and make a difference with a rewarding, impactful career in education.

Strong support and education foundations are critical for every child, and you can be part of providing these with a meaningful career in Early Childhood Education and Care or Education Support. Our Diploma of Early Childhood Education and Care teaches how children grow and develop, and how to provide enriching experiences that will impact their learning and quality of life. Our Education Support courses are a great path into a rewarding career in a primary, secondary school or TAFE setting. They're also an excellent way to discover if education is the path for you before you enrol in a teaching degree.

Career is flexible around school hours.

Around 114,000 job openings* predicted in the next few years.

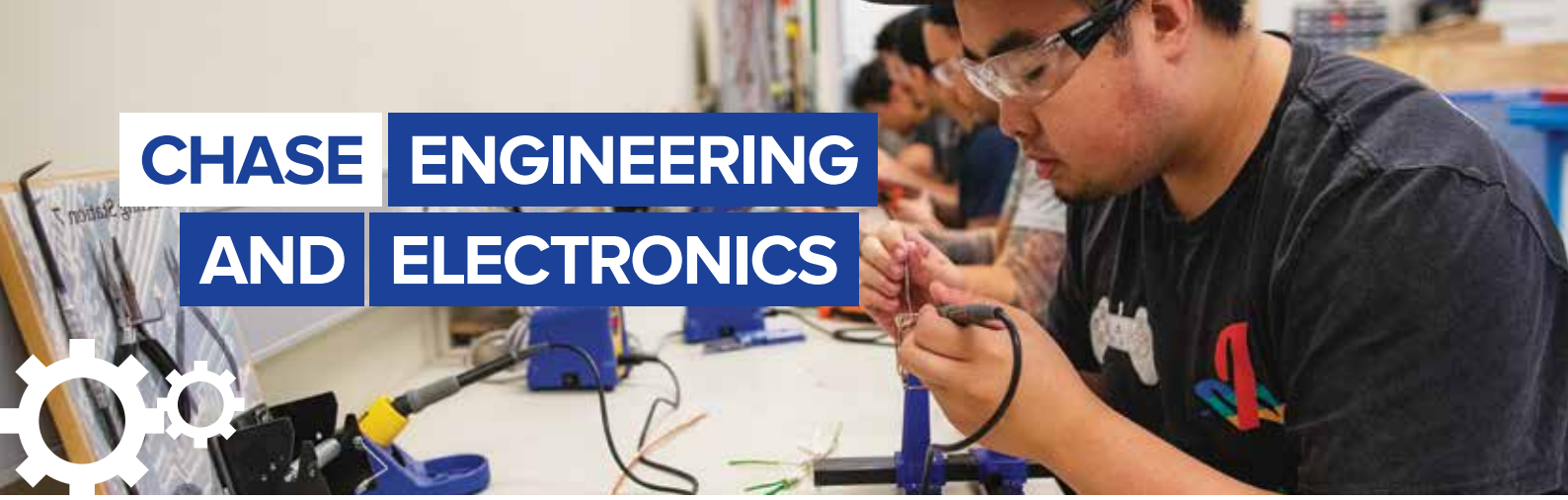
Opportunities to follow a full pathway from certificate to degree.

* www.joboutlook.gov.au, February 2019

EARLY CHILDHOOD EDUCATION

Location

Certificate III In Early Childhood Education And Care (CHC30113) Entry Requirements: All Students need to be able to obtain a working with children's check prior to undertaking work placement. Duration: 9 months full time, 18 months part time	BC, B, D, F, MP
Certificate III In Early Childhood Education And Care / Certificate IV In School Age Education And Care (CHC30113) / (CHC40113) Entry Requirements: All Students need to be able to obtain a working with children's check prior to undertaking work placement. Duration: 18 months full time	BC, B, D, F, MP
Certificate III In Education Support (CHC30213) Entry Requirements: Police and Working with Children checks (obtained in Australia). Duration: 12 months part time	O
Certificate III In Education Support (CHC30213) Entry Requirements: All Students need to be able to obtain a working with children's check prior to undertaking work placement. To be accepted into the flexible delivery cohort applicants must possess a solid level of English Language and literacy skills for written and verbal. Duration: 9 months full time, 18 months part time	B, F
Certificate IV in Education Support (CHC40213) Entry Requirements: All Students need to be able to obtain a working with children's check prior to undertaking work placement. Duration: 9 months full time, 17 months part time	BC, B, D, F, MP
Diploma Of Early Childhood Education And Care (CHC50113) Entry Requirements: Students are required to produce a valid Working with Children Check and a satisfactory police check prior to commencement of the course. Duration: 1.5 years full time, 2.5 years part time	O
Diploma Of Early Childhood Education And Care (CHC50113) Entry Requirements: All Students need to be able to obtain a working with children's check prior to undertaking work placement. Duration: 18 months full time, 3 years part time	BC, B, D, F, MP
Diploma Of Early Childhood Education And Care / Diploma Of School Age Education And Care (CHC50113) / (CHC50213) Entry Requirements: All Students need to be able to obtain a working with children's check prior to undertaking work placement. Duration: 1.5 years full time	BC, B, D, F, MP
Diploma Of School Age Education And Care (CHC50213) Entry Requirements: Students must be able to produce a valid working with children check and police check prior to course commencement. Duration: 18 months full time	BC, B, D, F, MP
Bachelor Of Early Childhood Education (EBECEO) La Trobe University Partnership ● Entry Requirements: For more information on entry requirements for La Trobe University, please refer to chisholm.edu.au/bachelorearlylearning Duration: 2.5 years full time or part-time equivalent	O



CHASE ENGINEERING AND ELECTRONICS



If you love coming up with new ideas and creating solutions, and are looking for a career that will challenge and inspire you, make it happen with a career in engineering or electronics.

Engineering and Electronics is a great sector to turn your love for science, mathematics and complex problem solving into a satisfying career that can take you around Australia or around the world. The engineering industry has a revenue of \$46 billion* and engineers enjoy 40 per cent higher income than the national average**. If you want to be a part of it, the path begins with your first qualification at Chisholm. Your course will include both hands-on and theoretical learning and using state-of-the-art machinery in a miniature factory simulation. And because your course is just the beginning, we have ensured that your Chisholm Advanced Diploma and Bachelor in Engineering are recognised internationally.

Skills you can take around Australia – and the world.

Highly-regarded course in state-of-the-art setting, with opportunities to work with potential employers.

Opportunities to follow a full pathway from certificate to degree.

* IBISWorld, March 2019

** www.joboutlook.gov.au, June 2017

ELECTRONICS AND TELECOMS

Location

Certificate II In Electrotechnology (Career Start) (UEE22011) Preapprenticeship Entry Requirements: Completed Year 10 or equivalent, Minimum of 16 years of age. Duration: 10 weeks full time	BT, D, F, MP
Certificate II In Electronics (UEE21911) Entry Requirements: Year 10 preferred. Duration: 6 months full time, 1 year part time	D
Certificate III In Electrotechnology Electrician (UEE30811) Apprenticeship Entry Requirements: Apprentices must have a Registered Training Agreement with their employer. Duration: 4 years full time	B, D, F, MP
Certificate III In Electronics And Communications (UEE30911) Apprenticeship Entry Requirements: Apprentices must have a Registered Training Agreement with their employer. Duration: 1 year full time, 2 years part time	D
Certificate III In Telecommunications Technology (ICT30515) Entry Requirements: No formal requirements. Duration: 6 months part time	B, F
Certificate IV In Electronics And Communications (UEE40711) Entry Requirements: Year 11 (VCE) or equivalent, or mature age. Duration: 1.5 years full time, 3 years part time	D
Advanced Diploma Of Electronics And Communications Engineering (UEE60211) Entry Requirements: Mature age or relevant industry experience, Year 12 (VCE) or an equivalent qualification. Duration: 2 years full time, 5 years part time	D

ENGINEERING

Certificate II In Engineering (MEM20105) Split system airconditioning Entry Requirements: Approval from the Victorian Building Authority Plumbing Division (www.vba.vic.gov.au), Trainee Licence from the Australian Refrigeration Council (www.artick.org). Duration: 4 days part time	B
Certificate II in Engineering Studies (22470VIC) Entry Requirements: No formal requirements. Duration: 13 weeks full time, 6 months part time	D, F
Certificate III In Engineering - Fabrication Trade (MEM30305) Apprenticeship Entry Requirements: Apprentices must have a Registered Training Agreement with their employer. Duration: 3 years part time	D, F, W
Certificate III In Engineering - Mechanical Trade (MEM30205) Apprenticeship Entry Requirements: Apprentices must have a Registered Training Agreement with their employer. Duration: 3 years part time	D, W
Certificate IV In Engineering (MEM40105) Entry Requirements: Relevant industry experience preferred. Duration: 2 years full time, 3 years part time	D, F, W
Certificate IV In Engineering Drafting (MEM40412) Entry Requirements: No formal requirements. Duration: 1 year full time, 2 years part time	D
Diploma of Engineering Technology (22478VIC) Entry Requirements: All students must have a registered USI and complete a pre-training review prior to enrolment. Duration: 1 year full time, 2 years part time	D
Bachelor Of Engineering Technology (CRS1201286) Mechatronics Entry Requirements: For more information on entry requirements, please refer to: chisholm.edu.au/bachelormechatronics . Duration: 3 years full time or part-time equivalent.	D
Bachelor Of Engineering Technology (CRS1201286) Mechanical And Manufacturing Entry Requirements: For more information on entry requirements, please refer to: chisholm.edu.au/bachelormechanical . Duration: 3 years full time or part-time equivalent.	D

Locations:

@311 Lonsdale St Dandenong, B Berwick, BC Bass Coast, BT Berwick TEC, C Cranbourne, D Dandenong, F Frankston, MP Mornington Peninsula, O Online, S Springvale, W Workplace



CHASE HAIR BEAUTY AND MAKE-UP

Turn your passion for hairdressing, beauty or make-up into a beautiful career.

Do you have a flair for creativity combined with practical skill? If you do, the hair, beauty and make-up industry is calling – and growing. Boosted by demands for creativity and new techniques from the fashion, media and design industries, hair, beauty and makeup are booming, and you could be a part of it with one of our courses at Chisholm. We pride ourselves on truly knowing our stuff. We deliver engaging courses to ensure that you're prepared for the workplace and excel at your craft. Our facilities include simulated state-of-the-art salon environments to make the learning journey authentic. You'll also have the opportunity to enter prestigious competitions and get plenty of experience in working salons.

Work in salons, retail, at events, film and television, and as a freelancer all around Australia, overseas and on cruise ships.

Around 67,000 job openings* predicted in the next few years.

Flexible hours.

* www.joboutlook.gov.au, February 2019

BEAUTY SERVICES

Location

Certificate III In Beauty Services (SHB30115) Entry Requirements: Year 11 or mature age entry. Duration: 6 months full time	D
Certificate III in Nail Technology (SHB30315) Entry Requirements: No formal requirements. Duration: 10 months part time	D
Diploma Of Beauty Therapy (SHB50115) Entry Requirements: Year 12 (VCE) or equivalent; minimum 18 years of age. Duration: 15 months full time	B, F, MP

HAIRDRESSING

Certificate II In Salon Assistant (SHB20216) Entry Requirements: Minimum of 16 years of age. Duration: 18 weeks full time	B, D, F, MP
Certificate III In Hairdressing (SHB30416) Non apprenticeship Entry Requirements: Minimum age of 17 years of age. Duration: 16 months full time	B, D, F, MP
Certificate III In Barbering (SHB30516) Apprenticeship Entry Requirements: Applicants must be 15 years and over to enrol in this course, Apprentices must have a Registered Training Agreement with their employer. Duration: 2 years part time	B, F, W
Certificate III In Barbering (SHB30516) Non apprenticeship Entry Requirements: Minimum age of 17 years of age, No formal requirements. Duration: 30 weeks full time	B, F
Certificate III In Hairdressing (SHB30416) Apprenticeship Entry Requirements: Applicants must be 15 years and over to enrol in this course, Apprentices must have a Registered Training Agreement with their employer. Duration: 26 months part time	B, D, F, MP, W

MAKE-UP

Certificate III In Make-up (SHB30215) Entry Requirements: No formal requirements. Duration: 6 months full time	B, D, F
Certificate IV In Screen And Media (CUA41215) Specialist make-up services Entry Requirements: No formal requirements. Duration: 6 months full time	B, D, F
Diploma Of Screen And Media (CUA51015) Specialist make-up services Entry Requirements: Students must be 18 years of age at enrolment. Duration: 1 year full time	D, F

MASSAGE

Certificate IV In Massage Therapy (HLT42015) Entry Requirements: Applicants must be 18 years or over, Completion of year 12 or equivalent or mature age entry. Duration: 22 weeks full time	F
Diploma Of Remedial Massage (HLT52015) Entry Requirements: Year 12 (VCE) or equivalent or mature age (at least 18 years of age and away from formal education for at least one year). Duration: 1 year full time	F
Advanced Diploma of Myotherapy (22316VIC) Entry Requirements: Must provide evidence of competencies equivalent to those defined by HLT50307 Diploma of Remedial Massage or HLT52015 Diploma of Remedial Massage from the HLT training package. Duration: 12 months full time	F

Locations:

@311 Lonsdale St Dandenong, B Berwick, BC Bass Coast, BT Berwick TEC, C Cranbourne, D Dandenong, F Frankston, MP Mornington Peninsula, O Online, S Springvale, W Workplace

CHASE HEALTH AND COMMUNITY SERVICES



Make a difference in people's lives and the community with a rewarding and respected career in health or community services.

If you care about people and their welfare, you can forge a career as a valued health or community services professional. Health and community services is one of the fastest growing job sectors in the workforce* and it shows, with the Victorian Government investing heavily in training to meet increasing needs. The sector is broad and includes disability, aged care, counselling, nursing, drugs and alcohol, mental health, justice, youth work and much more. But variety is just the beginning, because working in healthcare makes a difference in people's lives; this will also make a positive difference in your life.

**Around 100,000 job
openings* predicted
in 2020 alone.**

**Rich and rewarding
industry with many
career choices**.**

**Work around Australia,
and even overseas.**

* www.joboutlook.gov.au, February 2019

**www.myskills.gov.au, April 2019

AGED CARE, DISABILITY SERVICES, HEALTH AND COMMUNITY CARE

Location

Certificate III In Individual Support (CHC33015) Disability Entry Requirements: Mature age entry, Students are required to produce a valid Working with Children Check and a satisfactory police check prior to commencement of the course. Duration: 9 months 1 year	O
Certificate III In Individual Support (CHC33015) Disability Entry Requirements: Students must be able to produce a valid working with children check and police check prior to course commencement. Duration: 6 months	B, F
Certificate III In Individual Support (CHC33015) Ageing, Home and Community Entry Requirements: Mature age entry, Students are required to produce a valid Working with Children Check and a satisfactory police check prior to commencement of the course. Duration: 9 months 1 year	O
Certificate III In Individual Support (CHC33015) Ageing Entry Requirements: Students must be able to produce a valid working with children check and police check prior to course commencement. Duration: 6 months	B, F
Certificate IV In Ageing Support (CHC43015) Entry Requirements: No formal requirements, however industry experience is preferred, Students must provide a satisfactory police check. Duration: 1 year	BC, MP
Certificate IV In Ageing Support (CHC43015) Entry Requirements: Students are required to produce a valid Working with Children Check and a satisfactory police check prior to commencement of the course. Duration: 1 year 18 months	O
Certificate IV In Disability (CHC43115) Entry Requirements: Applicants must be over the age of 18 for the online course, Applicants will undertake a telephone interview prior to enrolment, Mature age entry with Year 12 (VCE) or equivalent qualification, Relevant industry experience preferred, Students are required to produce a valid Working with Children Check and a satisfactory police check prior to commencement of the course. Duration: 6 months full time, 9 months part time	O
Certificate IV In Disability (CHC43115) Entry Requirements: Attendance at an interview prior to enrolment, Mature age entry, Relevant industry experience preferred, Students must be able to produce a valid working with children check and police check prior to course commencement, Year 12 (VCE) or an equivalent qualification Duration: 1 year full time	BC, B, F, MP

ALCOHOL OTHER DRUGS AND MENTAL HEALTH

Course in Introduction to the National Disability Insurance Scheme (22469VIC) Entry Requirements: No formal requirements. Duration: 6 days full time, 5 weeks part time	B, D, F
Diploma Of Mental Health (CHC53315) Entry Requirements: Applicants must be over the age of 18 for the online course, Mature age entry with Year 12 (VCE) or equivalent qualification, Relevant industry experience preferred, Students must be able to produce a valid working with children check and police check prior to course commencement, Telephone interview prior to entry into the course. Duration: 1 year full time, 1.5 years part time	O
Diploma Of Mental Health (CHC53315) Entry Requirements: Attendance at an interview prior to enrolment, Certificate IV in Alcohol and Other Drugs, or Certificate IV in Mental Health or equivalent, or relevant industry experience, mature age (over 18 years of age), satisfactory completion of Chisholm's VET entry assessment, Working with children check and police checks are a compulsory requirement for practical placement. Duration: 1 year full time	C
Diploma Of Mental Health / Diploma Of Alcohol And Other Drugs (CHC53215) /(CHC53315) Entry Requirements: Applicants must be over the age of 18 for the online course, Mature age entry with Year 12 (VCE) or equivalent qualification, Relevant industry experience preferred, Telephone interview prior to entry into the course, Working with children check and police checks are a compulsory requirement for practical placement. Duration: 1.5 years full time, 2 years part time	O
Certificate IV In Alcohol And Other Drugs (CHC43215) Entry Requirements: Attend an information session, attend and participate in a group interview and complete a written task., mature age (over 18 years of age), meet the national literacy, language and numeracy standards, Working with children check and police checks are a compulsory requirement for practical placement. Duration: 9 months full time	B, F

Locations:

@311 Lonsdale St Dandenong, B Berwick, BC Bass Coast, BT Berwick TEC, C Cranbourne, D Dandenong, F Frankston, MP Mornington Peninsula, O Online, S Springvale, W Workplace

Diploma Of Alcohol And Other Drugs (CHC53215) Entry Requirements: Attendance at an interview prior to enrolment, Certificate IV in Alcohol and Other Drugs, or Certificate IV in Mental Health or equivalent, or relevant industry experience, mature age (over 18 years of age), satisfactory completion of Chisholm's VET entry assessment, Working with children check and police checks are a compulsory requirement for practical placement. Duration: 1 year full time	C
Diploma Of Alcohol And Other Drugs (CHC53215) Entry Requirements: Applicants must be over the age of 18 for the online course, Mature age entry with Year 12 (VCE) or equivalent qualification, Relevant industry experience preferred, Students are required to produce a valid Working with Children Check and a satisfactory police check prior to commencement of the course. Telephone interview prior to entry into the course. Duration: 1 year full time. 1.5 years part time	O
Bachelor Of Community Mental Health, Alcohol And Other Drugs (CRS1201285) Entry Requirements: For more information on entry requirements, please refer to: chisholm.edu.au/bachelormental . Duration: 3 years full time, 6 years part time	B
Graduate Diploma In Alcohol And Other Drug Addiction Counselling (CRS1400478) Entry Requirements: For more information on entry requirements, please refer to: chisholm.edu.au/graduateaod . Duration: 2 years part time	D

COMMUNITY SERVICES AND DEVELOPMENT

Certificate III In Community Services (CHC32015) Entry Requirements: Applicants must be 18 years or over, Relevant work or life experience highly regarded. Duration: 6 months full time	BC, D, F
Certificate IV In Leisure And Health (CHC43415) Entry Requirements: No formal requirements. Duration: 1 year part time	BC, MP
Diploma Of Community Services (CHC52015) Entry Requirements: Attend an information / interview session, Meet the language, literacy and numeracy (LLN) standards for Diploma entry. Preferred applicants hold a Certificate III or IV in Community services / Youth Work or equivalent, are of mature age and / or hold industry experience. Working with children check and police checks are a compulsory requirement for practical placement. Duration: 2 years full time	D, F
Bachelor Of Community Services (HBCSVD) La Trobe University Partnership ● Entry Requirements: For more information on entry requirements for La Trobe University, please refer to: chisholm.edu.au/bachelorcommunity . Duration: 2 years full time or part-time equivalent	D
Graduate Certificate in Family Violence (CRS1400479) Entry Requirements: For more information on entry requirements, please refer to: chisholm.edu.au/gradcertfamily . Duration: 1 year part time	D

HEALTH AND COMMUNITY CARE

Location

Certificate III in Allied Health Assistance (HLT33015) Entry Requirements: No formal requirements. Duration: 6 months full time	B, F
Certificate III In Dental Assisting (HLT35015) Entry Requirements: Mandatory attendance on orientation day (first day), Proof of Immunisation, Students must be able to produce a valid working with children check and police check prior to course commencement. Duration: 9 months full time	F, W
Certificate III In Health Services Assistance (HLT33115) Operating theatre technician Entry Requirements: Basic written and oral communication skills, Students must be able to produce a valid working with children check and police check prior to course commencement. Duration: 9 months part time	F
Certificate III In Health Services Assistance (HLT33115) Entry Requirements: Immunisations need to be up to date prior to placement, Sound written and verbal communication skills, Students must be able to produce a valid working with children check and police check prior to course commencement. Duration: 6 months part time	B, F
Certificate III In Individual Support (CHC33015) Home and Community Health and Community Care Entry Requirements: Students must be able to produce a valid working with children check and police check prior to course commencement. Duration: 6 months	BC, MP
Certificate III In Pathology Collection (HLT37215) Entry Requirements: Basic written and oral communication skills, Students must be able to produce a valid working with children check and police check prior to course commencement. Duration: 6 months full time	B, F
Certificate III In Sterilisation Services (HLT37015) Entry Requirements: Basic written and oral communication skills, Students must be able to produce a valid working with children check and police check prior to course commencement. Duration: 6 months part time	F
Certificate IV In Mental Health (CHC43315) Entry Requirements: mature age (over 18 years of age), meet the national literacy, language and numeracy standards, Police and Working with Children checks (obtained in Australia). Duration: 1 year full time, 2 years part time	O
Certificate IV In Mental Health (CHC43315) Entry Requirements: Attend an information session, attend and participate in a group interview and complete a written task., mature age (over 18 years of age), meet the national literacy, language and numeracy standards, Police and Working with Children checks (obtained in Australia). Duration: 9 months full time	B, F
Diploma Of Counselling (CHC51015) Entry Requirements: mature age (over 18 years of age), satisfactory completion of Chisholm's (VET) entry assessment, attend an information session, attend and participate in a group interview and complete a written task., Working with children check and police checks are a compulsory requirement for practical placement. Duration: 1 year full time	B, F

JUSTICE

Certificate IV in Legal Services (BSB42215) Entry Requirements: Mature age with relevant industry experience, Year 12 (VCE) or an equivalent qualification. Duration: 6 months full time	F
Diploma of Justice (22320VIC) Entry Requirements: Students also need to be able use a personal computer, including basic word processing, spreadsheet and electronic communication platforms as well as internet search engines Students need to have a demonstrated capacity in learning, reading, writing, oracy and numeracy to level 4 of the Australian Core Skills Framework (ACSF). Students will read complex text with specialised vocabulary; embed information in a justice context; and conduct complex analysis, which includes extracting, extrapolating and reflecting on information and some abstract themes, Year 12 (VCE) or an equivalent qualification. Duration: 1 year full time, 2 years part time	D, F, S
Advanced Diploma Of Justice (22321VIC) Entry Requirements: Diploma of Justice. Duration: 1 year full time, 2 years part time	F

NURSING

Location

Diploma Of Nursing (HLT54115) Entry Requirements: All students entering this program must demonstrate they have achieved the Nursing and Midwifery Board of Australia (NMBA) specified level of English language skills, prior to commencing the program. Applicants must be over the age of 18 years, complete a Language, Literacy and Numeracy (LLN) test and attend a 15-minute interview. The Diploma of Nursing has program entry criteria set by the Australian Nursing and Midwifery Accreditation Council. Duration: 1.5 years full time, 2 years part time	B, F
Bachelor Of Nursing (Enrolled Nurse) (HBNENK) La Trobe University Partnership ● Entry Requirements: Applicants are required to be aware of the inherent requirements of this course. For more information on entry requirements for La Trobe University, please refer to: chisholm.edu.au/bachelornursing . Duration: 2 years full time or part-time equivalent.	B, F

YOUTH WORK

Certificate IV In Youth Work (CHC40413) Entry Requirements: Attend an information / interview session, Meet the language, literacy and numeracy (LLN) standards for Certificate IV entry, Preferred applicants have mature outlook (over 18 years plus), Working with children check and police checks are a compulsory requirement for practical placement. Duration: 1 year full time	B, F
Diploma Of Youth Work (CHC50413) Entry Requirements: Attend an information / interview session, Certificate IV in Youth work or equivalent, or relevant industry experience, Mature age preferably 21 years plus, Meet the language, literacy and numeracy (LLN) standards. Working with children check and police checks are a compulsory requirement for practical placement. Duration: 1 year full time	B, F



Locations:

@311 Lonsdale St Dandenong, B Berwick, BC Bass Coast, BT Berwick TEC, C Cranbourne, D Dandenong, F Frankston, MP Mornington Peninsula, O Online, S Springvale, W Workplace



CHASE HORTICULTURE CONSERVATION AND LANDSCAPING

**Grow your love of
the outdoors and the
environment, and your
vision and creativity,
into a fruitful career.**

If you want to be outside doing work that's enjoyable and meaningful, a career in horticulture, conservation or landscaping could be for you. The job opportunities in this sector are vast and varied, and can include everything from being an assistant at a nursery or working in water maintenance, to working as a hydrographer, landscaper, horticulturist, park ranger, fisheries officer, natural resource manager, marine park manager, researcher and much more. And with our excellent courses and world-class horticulture and conservation facilities, we can help you get there – and thrive.

**Varied work in the
great outdoors.**

**Around 56,000 job
openings* predicted
in the next few years.**

**Work that makes
a difference in
communities here
and overseas.**

* www.joboutlook.gov.au, February 2019

CONSERVATION AND LAND MANAGEMENT

Location

Certificate III In Conservation And Land Management (AHC31416) Entry Requirements: No formal requirements. Duration: 6 months full time, 1 year part time	MP
Certificate IV In Conservation And Land Management (AHC40916) Entry Requirements: No formal requirements however industry experience or Certificate III in Conservation and Land Management would be an advantage. Duration: 2 years part time	MP
Diploma Of Conservation And Land Management (AHC51116) Entry Requirements: No formal requirements however industry experience or Certificate IV in Conservation and Land Management would be an advantage. Duration: 2 years part time	MP

HORTICULTURE AND LANDSCAPING

Certificate II In Horticulture (AHC20416) Entry Requirements: No formal requirements. Duration: 6 months full time, 1 year part time	C, MP
Certificate II in Production Nursery (AHC20716) Entry Requirements: No formal requirements. Duration: 6 months full time, 2 years part time	C, W
Certificate III In Horticulture (AHC30716) Entry Requirements: No formal requirements. Duration: 6 months full time, 2 years part time	C, MP
Certificate III In Irrigation (AHC32416) Horticulture and Landscaping Entry Requirements: Apprentices must have a Registered Training Agreement with their employer. Duration: 1 year full time	C
Certificate III In Landscape Construction (AHC30916) Apprenticeship Entry Requirements: Apprentices must have a Registered Training Agreement with their employer. Duration: 3 years part time	C
Certificate III In Parks And Gardens (AHC31016) Apprenticeship Entry Requirements: Apprentices and Trainees must have a 'Registered Training Agreement' with their employer. Duration: 3 years part time	C
Certificate III In Production Horticulture (AHC30616) Apprenticeship Entry Requirements: Apprentices and Trainees must have a 'Registered Training Agreement' with their employer. Duration: 2 years part time	C
Certificate III In Production Nursery (AHC31116) Apprenticeship Entry Requirements: Apprentices and Trainees must have a 'Registered Training Agreement' with their employer. Duration: 3 years part time	C
Diploma Of Horticulture (AHC50416) Entry Requirements: No formal requirements. Duration: 2 years part time	C

WATER SERVICES

Certificate II in Water Industry Operations (NWP20115) Entry Requirements: Basic written and verbal communication skills. Duration: 1 year part time	W
Certificate III in Water Industry Irrigation (NWP30415) Entry Requirements: Basic written and verbal communication skills. Duration: 1 year part time	W
Certificate III in Water Industry Operations (NWP30215) Entry Requirements: Chisholm requires that applicants be employed and working in the water industry. Duration: 1 year part time	W
Certificate III in Water Industry Treatment (NWP30315) Entry Requirements: Chisholm requires that applicants be employed and working in the water industry. Duration: 1 year part time	W

Locations:

@311 Lonsdale St Dandenong, B Berwick, BC Bass Coast, BT Berwick TEC, C Cranbourne, D Dandenong, F Frankston, MP Mornington Peninsula, O Online, S Springvale, W Workplace

CHASE HOSPITALITY AND EVENTS



Whether you want to be a master chef or event manager, a hospitality or event management course at Chisholm can get you there.

Whether you're dreaming of being a star chef or pâtissier, organising spectacular events, making people feel special front-of-house or becoming the best barista in town, the future is looking good – and at Chisholm, we can help you get there with one of our hospitality or event management courses. If you're passionate about people, food and wine, service and experiences, the sector is perfect for you and always open to people who love their work. As a bonus, people who work in hospitality and events also have a reputation for having a range of highly developed employability skills, so your career in this sector could also springboard you into a career in another sector in future.

'Evergreen' work you can take anywhere.

Around 221,000 job openings* in predicted in the next few years.

Make your passion your career.

* www.joboutlook.gov.au, February 2019

COOKERY AND PATISSERIE

Location

Certificate II In Kitchen Operations (SIT20416) Entry Requirements: No formal requirements Duration: 6 months full time, 18 months part time	D, F, MP
Certificate III In Commercial Cookery (SIT30816) Entry Requirements: Year 10 or equivalent, or mature age with relevant work experience Duration: 11 months full time, 3 years part time	D, F, MP, W
Certificate III In Commercial Cookery (SIT30816) Apprenticeship Entry Requirements: Apprentices must have a Registered Training Agreement with their employer Duration: 3 years part time	D, F, MP, W
Certificate III In Patisserie (SIT31016) Entry Requirements: Year 10 or equivalent, or mature age with relevant work experience Duration: 8 months full time, 2 years part time	D
Certificate IV In Commercial Cookery (SIT40516) Entry Requirements: Certificate III Commercial Cookery. Duration: 6 months full time, 2 years part time	D, F, W
Certificate IV In Patisserie (SIT40716) Entry Requirements: Certificate III in Patisserie. Duration: 10 months full time, 2 years part time	D, F

HOSPITALITY AND EVENT MANAGEMENT

Certificate II In Hospitality (SIT20316) Front of House Entry Requirements: No formal requirements. Duration: 15 weeks full time, 25 weeks part time	BC, D, F, MP
Certificate III in Hospitality (SIT30616) Entry Requirements: No formal requirements. Duration: 6 months full time, 18 months part time	BC, D, F, MP, W
Certificate III In Hospitality (Restaurant Front Of House) (SIT30716) Non Apprenticeship Entry Requirements: No formal requirements. Duration: 6 months full time, 18 months part time	D, F, MP
Certificate III In Hospitality (Restaurant Front Of House) (SIT30716) Apprenticeship Entry Requirements: Apprentices must have a Registered Training Agreement with their employer, Year 10 or equivalent, or mature age with relevant work experience. Duration: 9 months full time, 2 years part time	MP, W
Certificate IV In Commercial Cookery (SIT40516) Apprenticeship Entry Requirements: Completion of the Certificate III in Commercial Cookery. Duration: 2 years part time	D, F, W
Certificate IV in Hospitality (SIT40416) Entry Requirements: Certificate III in Hospitality. Duration: 6 months full time, 18 months part time	D, F, W
Diploma Of Event Management (SIT50316) Entry Requirements: Diploma of Hospitality. Duration: 6 months full time, 18 months part time	D

Locations:

@311 Lonsdale St Dandenong, B Berwick, BC Bass Coast, BT Berwick TEC, C Cranbourne, D Dandenong, F Frankston, MP Mornington Peninsula, O Online, S Springvale, W Workplace

CHASE INFORMATION TECHNOLOGY



Make the Digital Age your time to shine with a career in IT.

From receiving your salary to sending a text message, playing a game, watching a movie or accessing information, it's clear that technology is entrenched in all our lives. It's progressing at incredible speed – and so are the opportunities. If you want to grab yours, we can help. At Chisholm, we offer a range of courses that will equip you with all the essential skills you'll need for this fast-moving sector. Whether you want to pursue games development, library and information services, multimedia and web development, or specialisations like cyber security or software development, we can give you what you need to shine in all aspects of computer technology.

**Vast, fast-moving,
growing sector.**

**Around 284,000
job openings* in our
predicted in the next
few years.**

High earning potential.

* www.joboutlook.gov.au, February 2019

INFORMATION TECHNOLOGY

Location

Certificate II In Information, Digital Media And Technology (ICT20115) PC diagnostics, troubleshooting and repair Entry Requirements: No formal requirements. Duration: 6 months full time, 1 year part time	B, D, F
Certificate III In Information, Digital Media And Technology (ICT30115) Traineeship Entry Requirements: Attendance at an interview prior to enrolment, Trainees must have a Registered Training Agreement with their employer. Duration: 1 year full time, 2 years part time	W
Certificate III In Information, Digital Media And Technology (ICT30115) Entry Requirements: No formal requirements. Duration: 6 months full time, 1 year part time	B, D, F
Certificate IV in Cyber Security (22334VIC) Entry Requirements: VCE or Certificate III in Information, Digital Media and Technology (ICT30115) or industry experience. Duration: 1 year full time. 2 years part time	B, D, F
Certificate IV In Information Technology (ICT40115) Traineeship Entry Requirements: Attendance at an interview prior to enrolment, Trainees must have a Registered Training Agreement with their employer. Duration: 1 year full time, 2 years part time	W
Certificate IV In Information Technology (ICT40115) Entry Requirements: Year 12 or mature age with relevant experience. Duration: 6 months full time, 1 year part time	B, D, F
Certificate IV In Information Technology Networking (ICT40415) Entry Requirements: Year 12 (VCE). Duration: 1 year full time, 2 years part time	B, D, F
Certificate IV In Information Technology Support (ICT40215) Traineeship Entry Requirements: Attendance at an interview prior to enrolment, Trainees must have a Registered Training Agreement with their employer, Year 10 Maths. Duration: 1 year full time, 3 years part time	W
Certificate IV In Information Technology Support (ICT40215) Information Technology. Entry Requirements: Year 12 (VCE). Duration: 1 year full time, 3 years part time	B, D, F
Certificate IV In Information Technology Support / Certificate IV In Information Technology Networking (ICT40215) / (ICT40215) Entry Requirements: Year 12 (VCE). Duration: 1 year full time, 2 years part time	B, D, F
Diploma Of Information Technology Networking (ICT50415) Entry Requirements: Successful completion of Certificate IV in IT Networking or Certificate IV in IT Support or relevant industry experience with interview. Duration: 6 months full time, 1 year part time	D
Diploma Of Software Development (ICT50715) Entry Requirements: Certificate IV in Programming or Certificate IV in Information Technology (with programming focus) or relevant industry experience with interview. Duration: 6 months full time, 1 year part time	B, D
Diploma Of Software Development / Certificate IV In Information Technology (ICT40115) / (ICT50715) Entry Requirements: Year 12 or mature age with relevant programming experience. Duration: 1 year full time, 2 years part time	B, D, F
Advanced Diploma of Cyber Security (22445VIC) Entry Requirements: Successful completion of the 22334VIC Certificate IV in Cyber Security or relevant industry experience with interview. Duration: 1 year full time, 2 years part time	D, F
Advanced Diploma Of Network Security (ICT60215) Entry Requirements: Successful completion of Diploma of IT Networking or relevant industry experience with interview. Duration: 6 months full time, 1 year part time	D
Bachelor Of Information Technology (SBITD) La Trobe University Partnership ● Entry Requirements: For more information on entry requirements for La Trobe University, please refer to: chisholm.edu.au/bachelorit . Duration: 2 years part time, or part-time equivalent	@311

LIBRARY AND INFORMATION SERVICES

Certificate IV In Library And Information Services (BSB42115) Entry Requirements: Good language, literacy and computer skills, Mature age entry, Year 12 (VCE) or an equivalent qualification. Duration: 6 months full time, 1 year part time	C, F
Diploma Of Library And Information Services (BSB52115) Entry Requirements: Attendance at an interview prior to enrolment, Mature age entry, Suitable literacy, numeracy, comprehension and computer skills, Year 12 (VCE) or an equivalent qualification. Duration: 1 year full time, 2 years part time	C

CHASE SPORTS FITNESS AND MASSAGE



If your passion is sport, fitness and wellness, leap into a dynamic career with Chisholm.

When you forge a career in sport, fitness or wellness, you join an industry that impacts the health and wellbeing of Australians. And at Chisholm we can get you there, with unique programs featuring exclusive partnerships through our Sports Academies. A career in sport, fitness or wellness helps you develop a range of values and skills, including improved self-esteem, emotional intelligence, self-discipline, time management, a strong work ethic, solid problem-solving techniques, teamwork, communication, resilience and leadership. These attributes are all transferable to other aspects of life and exactly what prospective employers and coaches are looking for.

Around 16,000 job openings* predicted in the next few years.

Keep fit and practise wellness while helping other people do the same.

Combine your passion with your career aspirations.

* www.joboutlook.gov.au, February 2019

SPORT RECREATION AND FITNESS

Location

Certificate III in Fitness (SIS30315) Entry Requirements: Graduates must be 18 to obtain registration with either Fitness Australia or Physical Activity Australia. Duration: 6 months full time, 1 year part time	B, F
Certificate IV in Fitness (SIS40215) Entry Requirements: Certificate III in Fitness. Duration: 6 months full time, 1 year part time	B, F
Certificate IV In Outdoor Recreation / Certificate IV In Guiding (SIS40313) / (SIT40216) Entry Requirements: Mature age or relevant industry experience, Year 12 (VCE) or an equivalent qualification, Students must be 18 years old at start date of course. Duration: 1 year full time, 2 years part time	F
Diploma Of Outdoor Recreation (SIS50310) Entry Requirements: Certificate IV in Outdoor Recreation or equivalent experience working within the outdoor industry. Duration: 1 year part time	F
Diploma Of Sport And Recreation Management / Diploma Of Sport Development (SIS50115) Entry Requirements: Year 12 (VCE) or an equivalent qualification. Duration: 1 year full time, 2 years part time	C
Bachelor Of Sports Coaching And Development (HBSCDC) La Trobe University Partnership ● Entry Requirements: For more information on entry requirements for La Trobe University, please refer to: chisholm.edu.au/bachelorsports . Duration: 2 years full time or part-time equivalent	C

MASSAGE

Certificate IV In Massage Therapy (HLT42015) Entry Requirements: Applicants must be 18 years or over, Completion of year 12 or equivalent or mature age entry. Duration: 22 weeks full time	F
Diploma Of Remedial Massage (HLT52015) Entry Requirements: Year 12 (VCE) or equivalent or mature age (at least 18 years of age and away from formal education for at least one year). Duration: 1 year full time	F
Advanced Diploma of Myotherapy (22316VIC) Entry Requirements: Must provide evidence of competencies equivalent to those defined by HLT50307 Diploma of Remedial Massage or HLT52015 Diploma of Remedial Massage from the HLT training package. Duration: 12 months full time	F



Locations:

@311 Lonsdale St Dandenong, B Berwick, BC Bass Coast, BT Berwick TEC, C Cranbourne, D Dandenong, F Frankston, MP Mornington Peninsula, O Online, S Springvale, W Workplace



CHASE TRAINING AND ASSESSMENT

Turn your love for mentoring and developing others' skills and knowledge into a satisfying, valued career.

Do you like helping others learn and achieve? Are you the person that people always go to in the office when they need to know more? If so, adding a training and assessment qualification to your resume can open up a world of employment opportunities in the corporate and TAFE or RTO sectors, including trainer, senior training officer, compliance officer, training manager and more. At Chisholm we love to teach, and we love teaching others how to teach – so we can help you have a fulfilling career sharing your industry knowledge with others.

Course offers part-time day, night, online and on-campus options.

Progress into Senior Educator roles, or pathway into Learning and Development.

Flexible hours.

TRAINING AND ASSESSING

Location

Certificate IV In Training And Assessment Upgrade TAE40110 to TAE40116, (TAE40116) Entry Requirements: Must hold and provide a TAE40110 Certificate in Training and Assessment Certificate (certified). Must provide a transcript (certified) of all units successfully completed from the TAE Training Package. Provide a third party report to demonstrate your recent vocational currency (2 years) and must be able to demonstrate vocational competency in their proposed teaching and assessing area. Duration: 6 days part time	B, C, D, F
Certificate IV In Training And Assessment Upgrade TAE40110 to TAE40116, (TAE40116) Entry Requirements: Must hold and provide a TAE40110 Certificate in Training and Assessment Certificate (certified). Must provide a transcript (certified) of all units successfully completed from the TAE Training Package. Provide a third party report to demonstrate your recent vocational currency (2 years) and must be able to demonstrate vocational competency in their proposed teaching and assessing area. Duration: 4 months part time	O
Certificate IV In Training And Assessment (TAE40116) Entry Requirements: Must be able to demonstrate vocational competency. Duration: 30 weeks part time	BC, B, C, D, F, MP
Diploma of Vocational Education and Training (TAE50116) Entry Requirements: Must be an experienced practitioner delivering training and assessment services within the vocational education and training (VET) sector. Duration: 18 months part time	C

Locations:

@311 Lonsdale St Dandenong, B Berwick, BC Bass Coast, BT Berwick TEC, C Cranbourne, D Dandenong, F Frankston, MP Mornington Peninsula, O Online, S Springvale, W Workplace

CHASE ALTERNATIVES TO SECONDARY SCHOOL



If you're a hands-on learner, take your VCE or VCAL studies to the adult TAFE environment and learn what you need along with what you love.

If you're ready to tackle Years 11 and 12 and are looking for an alternative to school, or are ready to join the world of work, we can help. At Chisholm, our VCE and VCAL are accredited secondary certificates and the same as what you get in secondary school. You can complete Year 11 or Year 12 in one year and move straight into a career or further study. Our VCAL programs are a hands-on option, and give you practical work-related experience as well as literacy, numeracy, personal and employability skills that are important for life and work.

VCAL can also give you a full industry qualification to fast-track your career.

Different to high school – be treated like an adult!

Pathway Guarantee into further study at Chisholm if you complete VCE or VCAL with us successfully.

VCE / VCAL FOUNDATION

Location

VCAL - Victorian Certificate Of Applied Learning (Foundation) (VCALFND001) Foundation College program Entry Requirements: Applicants must be at least 14 Years and 9 months of age, Complete a pre-training assessment for language, literacy and numeracy skills. Duration: 6 months	BC, B, C, D, F, MP
---	--------------------

VCE / VCAL INTERMEDIATE

VCAL - Victorian Certificate Of Applied Learning (Intermediate) (VCALINT001) Year 11 Automotive Entry Requirements: Attendance at an interview and evaluation is required, Students aged under 17 require a completed Transition from School form from their school, Year 10 completed for VCAL Intermediate (Yr 11). Duration: 1 year full time	BT, D
VCAL - Victorian Certificate Of Applied Learning (Intermediate) (VCALINT001) Year 11 Bricklaying Entry Requirements: Attendance at an interview and evaluation is required, Students aged under 17 require a completed Transition from School form from their school, Year 10 completed for VCAL Intermediate (Yr 11). Duration: 1 year full time	BT
VCAL - Victorian Certificate Of Applied Learning (Intermediate) (VCALINT001) Year 11 Carpentry Entry Requirements: Attendance at an interview and evaluation is required, Students aged under 17 require a completed Transition from School form from their school, Year 10 completed for VCAL Intermediate (Yr 11). Duration: 1 year full time	BT, F
VCAL - Victorian Certificate Of Applied Learning (Intermediate) (VCALINT001) Year 11 Choices Entry Requirements: Attendance at an interview and evaluation is required, Students aged under 17 require a completed Transition from School form from their school, Year 10 completed for VCAL Intermediate (Yr 11). Duration: 1 year full time	BC, BT, C, D
VCAL - Victorian Certificate Of Applied Learning (Intermediate) (VCALINT001) Year 11 Community Services Entry Requirements: Attendance at an interview and evaluation is required, Students aged under 17 require a completed Transition from School form from their school, Year 10 completed for VCAL Intermediate (Yr 11). Duration: 1 year full time	BT
VCAL - Victorian Certificate Of Applied Learning (Intermediate) (VCALINT001) Year 11 Digital Design and Graphics Entry Requirements: Attendance at an interview and evaluation is required, Students aged under 17 require a completed Transition from School form from their school, Year 10 completed for VCAL Intermediate (Year 11). Duration: 1 year full time	BT
VCAL - Victorian Certificate Of Applied Learning (Intermediate) (VCALINT001) Year 11 EAL Entry Requirements: Attendance at an interview and evaluation is required, Students aged under 17 require a completed Transition from School form from their school, Year 10 completed for VCAL Intermediate (Yr 11). Duration: 1 year full time	D
VCAL - Victorian Certificate Of Applied Learning (Intermediate) (VCALINT001) Year 11 Electrical Entry Requirements: Attendance at an interview and evaluation is required, Students aged under 17 require a completed Transition from School form from their school, Year 10 completed for VCAL Intermediate (Yr 11). Duration: 1 year full time	BT
VCAL - Victorian Certificate Of Applied Learning (Intermediate) (VCALINT001) Year 11 Fast Track Entry Requirements: Attendance at an interview and evaluation is required, Students aged under 17 require a completed Transition from School form from their school, Year 10 completed for VCAL Intermediate (Yr 11). Duration: 6 months	BT
VCAL - Victorian Certificate Of Applied Learning (Intermediate) (VCALINT001) Year 11 Fresh Start Entry Requirements: Attendance at an interview and evaluation is required, Students aged under 17 require a completed Transition from School form from their school, Year 10 completed for VCAL Intermediate (Yr 11). Duration: 16 weeks	F, D
VCAL - Victorian Certificate Of Applied Learning (Intermediate) (VCALINT001) Year 11 Hair and Beauty Entry Requirements: Attendance at an interview and evaluation is required, Students aged under 17 require a completed Transition from School form from their school, Year 10 completed for VCAL Intermediate (Yr 11). Duration: 1 year full time	BT
VCAL - Victorian Certificate Of Applied Learning (Intermediate) (VCALINT001) Year 11 Pathways Entry Requirements: Attendance at an interview and evaluation is required, Students aged under 17 require a completed Transition from School form from their school, Year 10 completed for VCAL Intermediate (Yr 11). Duration: 10 months	BT
VCAL - Victorian Certificate Of Applied Learning (Intermediate) (VCALINT001) Year 11 Plumbing Entry Requirements: Attendance at an interview and evaluation is required, Students aged under 17 require a completed Transition from School form from their school, Year 10 completed for VCAL Intermediate (Yr 11). Duration: 1 year full time	BT
VCAL - Victorian Certificate Of Applied Learning (Intermediate) (VCALINT001) Year 11 Rising Stars Basketball and Football Program Entry Requirements: Attendance at an interview and evaluation is required including on-field or on-court tryout, Students aged under 17 require a completed Transition from School form from their school, Year 10 completed for VCAL Intermediate (Yr 11). Duration: 1 year full time	C
VCAL - Victorian Certificate Of Applied Learning (Intermediate) (VCALINT001) Year 11 Trades Experience Entry Requirements: Attendance at an interview and evaluation is required, Students aged under 17 require a completed Transition from School form from their school, Year 10 completed for VCAL Intermediate (Yr 11). Duration: 9 months full time	BT

VCE / VCAL INTERMEDIATE

Location

VCAL - Victorian Certificate Of Applied Learning (Intermediate) (VCALINT001) Year 11 Young Parents Program Entry Requirements: Attendance at an interview and evaluation is required, Students aged under 17 require a completed Transition from School form from their school, Year 10 completed for VCAL Intermediate (Yr 11). Duration: 1 year full time	F
VCE - Victorian Certificate Of Education (VCE0000001Y11) Year 11 Rising Stars Basketball and Football programs Entry Requirements: Attendance at an interview and evaluation is required, Students aged under 17 require a completed Transition from School form from their school. Year 10 or equivalent is required for VCE Units 1 & 2 (Year 11). Duration: 2 years	C

VCE / VCAL SENIOR

VCAL - Victorian Certificate Of Applied Learning (Senior) (VCALSEN001) Year 12 Allied Health Assistant Entry Requirements: Attendance at an interview and evaluation is required, Students aged under 17 require a completed Transition from School form from their school, Year 11 or equivalent. Duration: 1 year full time	BT
VCAL - Victorian Certificate Of Applied Learning (Senior) (VCALSEN001) Year 12 Automotive Entry Requirements: Attendance at an interview and evaluation is required, Students aged under 17 require a completed Transition from School form from their school, Year 11 completed for VCAL Senior (Yr 12). Duration: 1 year full time	BT, D
VCAL - Victorian Certificate Of Applied Learning (Senior) (VCALSEN001) Year 12 Bricklaying Entry Requirements: Attendance at an interview and evaluation is required, Students aged under 17 require a completed Transition from School form from their school, Year 11 completed for VCAL Senior (Yr 12). Duration: 1 year full time	BT, C
VCAL - Victorian Certificate Of Applied Learning (Senior) (VCALSEN001) Year 12 Carpentry Entry Requirements: Attendance at an interview and evaluation is required, Students aged under 17 require a completed Transition from School form from their school, Year 11 completed for VCAL Senior (Yr 12). Duration: 1 year full time	BT, F
VCAL - Victorian Certificate Of Applied Learning (Senior) (VCALSEN001) Year 12 Choices Entry Requirements: Attendance at an interview and evaluation is required, Students aged under 17 require a completed Transition from School form from their school, Year 11 completed for VCAL Senior (Yr 12). Duration: 1 year full time	BC, BT, D, F, MP
VCAL - Victorian Certificate Of Applied Learning (Senior) (VCALSEN001) Year 12 Community Services Entry Requirements: Attendance at an interview and evaluation is required, Students aged under 17 require a completed Transition from School form from their school, Year 11 completed for VCAL Senior (Yr 12). Duration: 1 year full time	BT, C, F
VCAL - Victorian Certificate Of Applied Learning (Senior) (VCALSEN001) Year 12 Digital Design And Graphics Entry Requirements: Attendance at an interview and evaluation is required, Students aged under 17 require a completed Transition from School form from their school, Year 11 completed for VCAL Senior (Yr 12). Duration: 1 year full time	BT
VCAL - Victorian Certificate Of Applied Learning (Senior) (VCALSEN001) Year 12 EAL Entry Requirements: Attendance at an interview and evaluation is required, Students aged under 17 require a completed Transition from School form from their school, Year 11 completed for VCAL Senior (Yr 12). Duration: 1 year full time	D
VCAL - Victorian Certificate Of Applied Learning (Senior) (VCALSEN001) Year 12 Early Childhood Entry Requirements: Attendance at an interview and evaluation is required, Students aged under 17 require a completed Transition from School form from their school, Year 11 completed for VCAL Senior (Yr 12). Duration: 1 year full time	BT
VCAL - Victorian Certificate Of Applied Learning (Senior) (VCALSEN001) Year 12 Electrical Entry Requirements: Attendance at an interview and evaluation is required, Students aged under 17 require a completed Transition from School form from their school, Year 11 completed for VCAL Senior (Yr 12). Duration: 1 year full time	BT
VCAL - Victorian Certificate Of Applied Learning (Senior) (VCALSEN001) Year 12 Fast Track Entry Requirements: Attendance at an interview and evaluation is required, Students aged under 17 require a completed Transition from School form from their school, Year 11 completed for VCAL Senior (Yr 12). Duration: 6 months	BT
VCAL - Victorian Certificate Of Applied Learning (Senior) (VCALSEN001) Year 12 Fresh Start Entry Requirements: Attendance at an interview and evaluation is required, Students aged under 17 require a completed Transition from School form from their school, Year 11 completed for VCAL Senior (Yr 12). Duration: 16 weeks	BT, F
VCAL - Victorian Certificate Of Applied Learning (Senior) (VCALSEN001) Year 12 Hair and Beauty Entry Requirements: Attendance at an interview and evaluation is required, Students aged under 17 require a completed Transition from School form from their school, Year 11 completed for VCAL Senior (Yr 12). Duration: 1 year full time	BT

Locations:

@311 Lonsdale St Dandenong, B Berwick, BC Bass Coast, BT Berwick TEC, C Cranbourne, D Dandenong, F Frankston, MP Mornington Peninsula, O Online, S Springvale, W Workplace

VCE / VCAL SENIOR CONTINUED

Location

VCAL - Victorian Certificate Of Applied Learning (Senior) (VCALSEN001) Year 12 Nursing Entry Requirements: Attendance at an interview and evaluation is required, Students aged under 17 require a completed Transition from School form from their school, Year 11 completed for VCAL Senior (Yr 12). Duration: 1 year full time	BT
VCAL - Victorian Certificate Of Applied Learning (Senior) (VCALSEN001) Year 12 Pathways Entry Requirements: Attendance at an interview and evaluation is required, Students aged under 17 require a completed Transition from School form from their school, Year 11 completed for VCAL Senior (Yr 12). Duration: 10 months	BT
VCAL - Victorian Certificate Of Applied Learning (Senior) (VCALSEN001) Year 12 Plumbing Entry Requirements: Attendance at an interview and evaluation is required, Students aged under 17 require a completed Transition from School form from their school, Year 11 completed for VCAL Senior (Yr 12). Duration: 1 year full time	BT
VCAL - Victorian Certificate Of Applied Learning (Senior) (VCALSEN001) Year 12 Rising Stars basketball and football program Entry Requirements: Attendance at an interview and evaluation is required including on-field or on-court tryout, Students aged under 17 require a completed Transition from School form from their school, Year 11 completed for VCAL Senior (Yr 12). Duration: 1 year full time	BT, C
VCAL - Victorian Certificate Of Applied Learning (Senior) (VCALSEN001) Year 12 Young Parents Program Entry Requirements: Attendance at an interview and evaluation is required, Students aged under 17 require a completed Transition from School form from their school, Year 11 completed for VCAL Senior (Yr 12). Duration: 1 year full time	F

ENGLISH AS AN ADDITIONAL LANGUAGE EAL

Certificate I In EAL (Access) (22484VIC) Entry Requirements: Be a permanent resident or temporary protection/visitor visa holder from non-English speaking background, Complete a pre-training assessment for language, literacy and numeracy skills, Must be 15 years or over. Duration: 15 weeks full time, 25 weeks part time	B, C, D, F, S
Certificate II in EAL (Access) (22485VIC) Entry Requirements: Be a permanent resident or temporary protection/visitor visa holder from non-English speaking background, Complete a pre-training assessment for language, literacy and numeracy skills, Must be 15 years or over. Duration: 15 weeks full time, 25 weeks part time	B, C, D, F,
Certificate II In EAL (Employment) (22488VIC) Entry Requirements: Be a permanent resident or temporary protection/visitor visa holder from non-English speaking background, Complete a pre-training assessment for language, literacy and numeracy skills, Must be 15 years or over. Duration: 15 weeks full time, 25 weeks part time	B, C, D, F, S
Certificate III in EAL (Access) (22486VIC) Entry Requirements: Be a permanent resident or temporary protection/visitor visa holder from non-English speaking background, Complete a pre-training assessment for language, literacy and numeracy skills, Must be 15 years or over. Duration: 15 weeks full time, 25 weeks part time	B, C, D, F, MP
Certificate III In EAL (Employment) (22489VIC) Entry Requirements: Be a permanent resident or temporary protection/visitor visa holder from non-English speaking background, Complete a pre-training assessment for language, literacy and numeracy skills, Must be 15 years or over. Duration: 15 weeks full time, 25 weeks part time	B, C, D, F, S
Certificate III In EAL (Further Study) (22491VIC) Entry Requirements: Be a permanent resident or temporary protection/visitor visa holder from non-English speaking background, Complete a pre-training assessment for language, literacy and numeracy skills, Must be 15 years or over. Duration: 15 weeks full time, 25 weeks part time	B, C, D, F, S
Certificate IV In EAL (Employment/Professional) (22490VIC) Entry Requirements: Be a permanent resident or temporary protection/visitor visa holder from non-English speaking background, Complete a pre-training assessment for language, literacy and numeracy skills, Must be 15 years or over. Duration: 15 weeks full time, 25 weeks part time	B, C, D, F, S

ENGLISH AS AN ADDITIONAL LANGUAGE EAL CONTINUED

Location

Certificate IV In EAL (Further Study) (22492VIC) Entry Requirements: Be a permanent resident or temporary protection/visitor visa holder from non-English speaking background, Complete a pre-training assessment for language, literacy and numeracy skills, Must be 15 years or over. Duration: 15 weeks full time, 25 weeks part time	B, C, D, F, S
Course In EAL (22483VIC) Entry Requirements: Be a permanent resident or temporary protection/visitor visa holder from non-English speaking background, Complete a pre-training assessment for language, literacy and numeracy skills, Must be 15 years or over. Duration: 15 weeks full time, 25 weeks part time	B, C, D, F, S
Course in Initial EAL (22482VIC) Entry Requirements: Be a permanent resident or temporary protection/visitor visa holder from non-English speaking background, Complete a pre-training assessment for language, literacy and numeracy skills, Must be 15 years or over. Duration: 15 weeks full time, 25 weeks part time	B, C, D, F, S

Locations:

@311 Lonsdale St Dandenong, **B** Berwick, **BC** Bass Coast, **BT** Berwick TEC, **C** Cranbourne, **D** Dandenong, **F** Frankston, **MP** Mornington Peninsula, **O** Online, **S** Springvale, **W** Workplace

CHASE EMPLOYMENT AND FURTHER STUDY PREPARATION



Lay down the foundations for employment, further study or a pathway that suits your goals.

Sometimes before you embark on your new career, new course or new life, you need to brush up on the basics: language, literacy and numeracy. Or maybe you need extra, one-on-one learning support to finish secondary school. If this is you, our Employment and Further Study Preparation courses can help.

Our courses include General Education for Adults (CGEA), English as a Second Language (EAL) and Victorian Certificate of Applied Learning (VCAL).

The CGEA is designed to bridge learning gaps and prepare you for further study or employment. It's also a great option if you weren't able to complete Year 10.

VCAL is the practical equivalent to Years 11 and 12, with a focus on literacy, numeracy, employability skills and personal development. It can prepare you for further study and is also available as part of our renowned Young Parents Program.

Our EAL courses are designed to refine your English language skills so you can communicate more effectively in everyday life and prepare for further study and employment.

Supportive, positive environment.

Career and personal counselling, mentoring and tutoring.

No school uniforms or school bells – be treated like an adult!

GENERAL EDUCATION FOR ADULTS

Location

Certificate I in General Education for Adults (22472VIC) Entry Requirements: Applicants must be at least 14 Years and 9 months of age, Complete a pre-training assessment for language, literacy and numeracy skills. Duration: 20 weeks full time	B, C, D, F
Certificate I in General Education for Adults (Introductory) (22476VIC) Entry Requirements: Applicants must be at least 14 Years and 9 months of age, Complete a pre-training assessment for language, literacy and numeracy skills. Duration: 18 weeks full time	B, C, D, F
Certificate I in Initial Adult Literacy and Numeracy (22293VIC) Entry Requirements: Attendance at an interview prior to enrolment, Complete a pre-training assessment for language, literacy and numeracy skills, Must be 15 years or over, Students must have a disability and/or special learning needs. Duration: 6 months part time	D, F
Certificate I in Transition Education (22301VIC) Entry Requirements: Attendance at an interview prior to enrolment, Complete a pre-training assessment for language, literacy and numeracy skills, Must be 15 years or over, Students must have a disability and/or special learning needs. Duration: 1 year full time, 2 years part time	D, F
Certificate I in Work Education (22302VIC) Entry Requirements: Attendance at an interview prior to enrolment, Complete a pre-training assessment for language, literacy and numeracy skills, Must be 15 years or over, Students must have a disability and/or special learning needs. Duration: 1 year full time, 2 years part time	D, F
Certificate II in General Education for Adults (22473VIC) Entry Requirements: Applicants must be at least 14 Years and 9 months of age, Complete a pre-training assessment for language, literacy and numeracy skills. Duration: 18 weeks full time	B, C, D, F
Certificate II in Work Education (22481VIC) Entry Requirements: Attendance at an interview prior to enrolment, Complete a pre-training assessment for language, literacy and numeracy skills, Must be 15 years or over, Students must have a disability and/or special learning needs. Duration: 1 year full time	D, F
Certificate III in General Education for Adults (22474VIC) Entry Requirements: Applicants must be at least 14 Years and 9 months of age, Complete a pre-training assessment for language, literacy and numeracy skills. Duration: 18 weeks full time	B, C, D, F

Locations:

@311 Lonsdale St Dandenong, **B** Berwick, **BC** Bass Coast, **BT** Berwick TEC, **C** Cranbourne, **D** Dandenong, **F** Frankston, **MP** Mornington Peninsula, **O** Online, **S** Springvale, **W** Workplace

COURSE INDEX

Art and Design

Games Development

Certificate IV in Digital Media Technologies/ Certificate IV in Digital and Interactive Games (ICT40815) 20
Diploma of Digital Media Technology/ Diploma of Digital and Interactive Games (ICT50915) 20

Graphic Design

Certificate II In Printing And Graphic Arts (General) (ICP20115) 20
Certificate IV In Design (CUA40715) 20
Diploma Of Graphic Design (CUA50715) 20

Multimedia and Web Design

Certificate IV In Web-based Technologies (ICT40315) 20

Photography

Certificate IV In Photography And Photo Imaging (CUA41115) 20
Diploma Of Photography And Photo Imaging (CUA50915) 20

Visual Arts

Certificate IV In Visual Arts (CUA41315) 20
Diploma Of Visual Arts (CUA51115) Fine Arts 20
Diploma Of Visual Arts (CUA51115) Illustration 20

Automotive and Logistics

Automotive

Certificate II In Automotive Air Conditioning Technology (AUR20218) 22
Certificate II In Automotive Body Repair Technology (AUR20916) Preapprenticeship 22
Certificate II In Automotive Servicing Technology (AUR20516) Preapprenticeship 22
Certificate III In Automotive Body Repair Technology (AUR32116) Apprenticeship 22
Certificate III In Automotive Refinishing Technology (AUR32416) Apprenticeship 22
Certificate III In Heavy Commercial Vehicle Mechanical Technology (AUR31116) Apprenticeship 22
Certificate III In Light Vehicle Mechanical Technology (AUR30616) Apprenticeship 22
Certificate III In Mobile Plant Technology (AUR31216) Apprenticeship 22
Certificate IV in Automotive Management (AUR40116) 22

Logistics

Certificate III in Warehousing Operations (TLI31616) 22
Diploma Of Logistics (TLI50415) 22

Building Trades

Bricklaying

Certificate III In Bricklaying / Blocklaying (CPC30111) Apprenticeship 24
Certificate II in Building and Construction Poe-apprenticeship (22338VIC) Bricklaying 24

Building and Construction

Certificate II In Building and Construction Pre-apprenticeship (22338VIC) Carpentry 24
Certificate II In Construction Pathways (CPC20211) 24
Certificate III In Carpentry (CPC30211) Apprenticeship 24
Certificate III In Carpentry And Joinery (CPC32011) Apprenticeship 24
Certificate III in Construction Waterproofing (CPC31411) 24
Certificate IV In Building And Construction (CPC40110) Building 24
Certificate IV In Building And Construction (CPC40110) Building – Online 24
Diploma of Building And Construction (CPC50210) Building 24

Building Design

Certificate IV In Natthers Assessment (CPP41212) 24
Advanced Diploma Of Building Design (22477VIC) Architectural 24

Cabinetry and Furniture Making

Certificate II In Furniture Making (MSF20313) Pre- apprenticeship 25
Certificate III In Cabinet Making (MSF31113) Apprenticeship 25

Plumbing

Certificate II In Plumbing (22304VIC) Pre-apprenticeship 25
Certificate III In Plumbing (CPC32413) 25
Certificate IV In Plumbing And Services (CPC40912) 25
Certificate IV In Plumbing And Services (CPC40912 – Online) 25

Business

Accounting

Certificate IV in Accounting and Bookkeeping (FNS40217) 27
Certificate IV in Accounting and Bookkeeping (FNS40217) – Online 27
Diploma Of Accounting (FNS50217) 27
Diploma Of Accounting (FNS50217) – Online 27
Advanced Diploma Of Accounting (FNS60217) 27
Bachelor Of Accounting (LBCE) La Trobe University Partnership 27

Business Administration

Certificate III In Business (BSB30115) Traineeship 27
Certificate III In Business Administration (BSB30415) Traineeship 27
Certificate III In Business Administration (Education) (BSB30915) 27
Certificate III In Business Administration (Education) (BSB30915) Traineeship 27
Certificate III In Business Administration (Medical) (BSB31115) Traineeship 27
Certificate IV In Business (BSB40215) General Administration 27
Certificate IV In Business (BSB40215) Medical Administration 27
Certificate IV In Business Administration (BSB40515) 27
Diploma Of Business Administration (BSB50415) – Online 27
Diploma Of Business Administration (BSB50415) Traineeship 27

Business Management

Certificate III In Micro Business Operations (BSB30315) 28
Certificate IV In Leadership And Management (BSB42015) 28
Diploma Of Business (BSB50215) 28
Diploma Of Business (BSB50215) – Online 28
Diploma Of Human Resources Management (BSB50618) 28
Diploma Of Human Resources Management (BSB50618) – Online 28
Diploma Of Leadership And Management (BSB51918) 28
Diploma Of Project Management (BSB51415) 28
Advanced Diploma Of Business (BSB60215) 28
Advanced Diploma Of Management (Human Resources) (BSB60915) 28
Advanced Diploma Of Leadership And Management (BSB61015) 28

19

20

20

20

20

20

20

20

20

20

20

20

20

20

20

20

20

20

20

20

20

20

20

20

20

20

20

20

20

20

20

20

20

20

20

20

20

20

20

20

20

20

20

20

20

20

20

20

20

20

20

20

20

20

20

20

20

20

20

20

20

20

20

20

20

20

20

20

20

20

20

20

20

20

20

20

20

20

20

20

20

20

20

20

Real Estate

Certificate IV In Property Services (Real Estate) (CPP40307) 28

Retail and Service

Certificate III In Community Pharmacy (SIR30116) 28

Certificate III in Retail (SIR30216) Traineeship 28

Work Health and Safety

Certificate IV In Work Health And Safety (BSB41415) 28

Diploma Of Work Health And Safety (BSB51315) 28

Early Childhood Education and Support

Early Childhood Education

Certificate III In Early Childhood Education And Care (CHC30113) 30
Certificate III in Early Childhood Education and Care (CHC30113) / Certificate IV in School Age Education and Care (CHC40113) 30
Certificate III In Education Support (CHC30213) 30
Certificate III In Education Support (CHC30213) – Online 30
Certificate IV in Education Support (CHC40213) 30
Diploma of Early Childhood Education And Care (CHC50113) 30
Diploma of Early Childhood Education And Care (CHC50113) – Online 30
Diploma of Early Education and Care (CHC50113) / Diploma of School Age Education and Care (CHC50213) 30
Diploma of School Age Education and Care (CHC50213) 30
Bachelor of Early Childhood Education (EBCEO) La Trobe University Partnership 30

Engineering and Electronics

Electronics and Telecoms

Certificate II In Electronics (UEE21911) 32
Certificate II in Electrotechnology (Career Start) (UEE22011) Pre-apprenticeship 32
Certificate III In Electronics And Communications (UEE30911) Apprenticeship 32
Certificate III Electrotechnology Electrician (UEE30811) Apprenticeship 32
Certificate III in Telecommunications Technology (ICT30515) 32
Certificate IV In Electronics And Communications (UEE40711) 32
Advanced Diploma Of Electronics And Communications Engineering (UEE60211) 32

Engineering

Certificate II In Engineering (MEM20105) Split System airconditioning 32
Certificate III In Engineering - Fabrication Trade (MEM30305) Apprenticeship 32
Certificate III In Engineering - Mechanical Trade (MEM30205) Apprenticeship 32
Certificate IV In Engineering (MEM40105) 32
Certificate IV In Engineering Drafting (MEM40412) 32
Diploma Of Engineering Technology (22229VIC) 32
Advanced Diploma Of Engineering Technology (22228VIC) 32
Bachelor Of Engineering Technology (CRS1201286) Mechatronics 32
Bachelor Of Engineering Technology (CRS1201286) Mechanical And Manufacturing 32

Hair, Beauty and Make-up

Beauty Services

Certificate III In Beauty Services (SHB30115) 34
Certificate III in Nail Technology (SHB30315) 34
Diploma of Beauty Therapy (SHB50115) 34

Hairdressing

Certificate II in Salon Assistant (SHB20216) 34
Certificate III In Hairdressing (SHB30416) Apprenticeship 34
Certificate III In Hairdressing (SHB30416) Non apprenticeship 34
Certificate III In Barbering (SHB30516) Apprenticeship 34
Certificate III In Barbering (SHB30516) Non apprenticeship 34

Make-up

Certificate III In Make-up (SHB30215) 34
Certificate IV In Screen And Media (CUA41215) Specialist make-up services 34
Diploma Of Screen And Media (CUA51015) Specialist make-up services 34

Massage

Certificate IV in Massage Therapy (HLT42015) 34
Diploma Of Remedial Massage (HLT52015) 34
Advanced Diploma Of Myotherapy (22316VIC) 34

Health and Community Services

Aged Care, Disability Services, Health And Community Care

Course in Introduction to the National Disability Insurance Scheme (22469VIC) 36
Certificate IV In Disability (CHC43115) 36
Certificate IV In Disability (CHC43115) – Online 36
Certificate III In Individual Support (CHC33015) Ageing 36
Certificate III In Individual Support (CHC33015) Ageing, Home and Community 36
Certificate III In Individual Support (CHC33015) Disability 36
Certificate III In Individual Support (CHC33015) Disability – Online 36
Certificate IV In Ageing Support (CHC43015) 36
Certificate IV In Ageing Support (CHC43015) – Online 36

Alcohol, Other Drugs and Mental Health

Certificate IV In Alcohol And Other Drugs (CHC43215) 36
Diploma Of Alcohol And Other Drugs (CHC53215) 36
Diploma Of Alcohol And Other Drugs (CHC53215) – Online 36
Diploma Of Mental Health (CHC53315) 36
Diploma Of Mental Health (CHC53315) – Online 37
Diploma Of Mental Health / Diploma Of Alcohol And Other Drugs (CHC53315) – Online 37
Bachelor Of Community Mental Health, Alcohol And Other Drugs (CRS1201285) 37
Graduate Diploma in Alcohol and Other Drug Addiction Counselling (CRS1400478) 37

Community Services and Development

Certificate III In Community Services (CHC32015) 37
Certificate IV In Leisure And Health (CHC43415) 37
Diploma Of Community Services (CHC52015) 37
Bachelor Of Community Services (HBCSVD) La Trobe University Partnership 37
Graduate Certificate in Family Violence (CRS1400479) 37

28

28

28

28

28

28

28

28

29

30

30

30

30

30

30

30

30

30

30

30

30

30

30

30

30

30

30

30

30

30

30

30

30

30

30

30

30

30

30

30

30

30

30

30

30

30

30

30

30

30

30

30

30

30

30

30

30

30

30

30

30

30

30

30

30

30

30

30

30

30

30

30

30

30

30

30

30

30

30

30

30

30

30

30

30

Health and Community Care	38	Sports, Fitness and Massage	46
Certificate III In Allied Health Assistance (HLT33015)	38	Sports, Recreation and Massage	47
Certificate III In Dental Assisting (HLT35015)	38	Certificate III in Fitness (SIS30315)	47
Certificate III In Health Services Assistance (HLT33115)	38	Certificate IV in Fitness (SIS40215)	47
Certificate III In Health Services Assistance (HLT33115) Operating theatre technician	38	Certificate IV In Outdoor Recreation / Certificate IV In Guiding (SIS40313)	47
Certificate III In Individual Support (CHC33015)	38	Diploma Of Sport And Recreation Management / Diploma Of Sport Development (SIS50115)	47
Certificate III In Pathology Collection (HLT37215)	38	Diploma Of Outdoor Recreation (SIS50310)	47
Certificate III In Sterilisation Services (HLT37015)	38	Bachelor Of Sports Coaching And Development (HBSCDC) La Trobe University Partnership	47
Certificate IV In Mental Health (CHC43315) - online	38	Massage	47
Certificate IV In Mental Health (CHC43315)	38	Certificate IV in Massage Therapy (HLT42015)	47
Diploma Of Counselling (CHC51015)	38	Diploma Of Remedial Massage (HLT52015)	47
Justice	39	Advanced Diploma Of Myotherapy (22316VIC)	47
Certificate IV in Legal Services (BSB42215)	39	Training and Assessment	48
Diploma of Justice (22320VIC)	39	Certificate IV In Training And Assessment (TAE40116)	49
Advanced Diploma Of Justice (22321VIC)	39	Certificate IV In Training And Assessment (TAE40116) Upgrade TAE40110 to TAE40116	49
Nursing	39	Certificate IV In Training And Assessment Upgrade TAE40110 to TAE40116, (TAE40116) - online	49
Diploma Of Nursing (HLT54115)	39	Diploma of Vocational Education and Training (TAE50116)	49
Bachelor of Nursing (Enrolled Nurse) (LATBNUR) La Trobe University Partnership	39	Alternatives to Secondary School	50
Youth Work	39	VCE/VCAL foundation	
Certificate IV In Youth Work (CHC40413)	39	VCAL – (Foundation) (VCALFND001) Work Education Foundation College program	51
Diploma Of Youth Work (CHC50413)	39	VCE/VCAL Intermediate	
Horticulture and Conservation	40	VCAL – (Intermediate) (VCALINT001) Year 11 Automotive	51
Conservation and Land Management	41	VCAL – (Intermediate) (VCALINT001) Year 11 Bricklaying	51
Certificate III In Conservation And Land Management (AHC31416)	41	VCAL – (Intermediate) (VCALINT001) Year 11 Carpentry	51
Certificate IV In Conservation And Land Management (AHC40916)	41	VCAL – (Intermediate) (VCALINT001) Year 11 Choices	51
Diploma Of Conservation And Land Management (AHC51116)	41	VCAL – (Intermediate) (VCALINT001) Year 11 Community Services	51
Horticulture and Landscaping	41	VCAL – (Intermediate) (VCALINT001) Year 11 Digital Design and Graphics	51
Certificate II In Horticulture (AHC20416)	41	VCAL – (Intermediate) (VCALINT001) Year 11 EAL	51
Certificate II in Production Nursery (AHC20716)	41	VCAL – (Intermediate) (VCALINT001) Year 11 Electrical	51
Certificate III In Horticulture (AHC30716) Apprenticeship	41	VCAL – (Intermediate) (VCALINT001) Year 11 Fast Track	51
Certificate III In Irrigation (AHC32416)	41	VCAL – (Intermediate) (VCALINT001) Year 11 Fresh Start	51
Certificate III In Landscape Construction (AHC30916) Apprenticeship	41	VCAL – (Intermediate) (VCALINT001) Year 11 Hair and Beauty	51
Certificate III In Parks And Gardens (AHC31016) Apprenticeship	41	VCAL – (Intermediate) (VCALINT001) Year 11 Pathways	52
Certificate III In Production Horticulture (AHC30616) Apprenticeship	41	VCAL – (Intermediate) (VCALINT001) Year 11 Plumbing	52
Certificate III In Production Nursery (AHC31116) Apprenticeship	41	VCAL – (Intermediate) (VCALINT001) Year 11 Rising Stars Basketball Program	52
Diploma Of Horticulture (AHC50416)	41	VCAL – (Intermediate) (VCALINT001) Year 11 Trades Experience	52
Water Services	41	VCAL – (Intermediate) (VCALINT001) Year 11 Young Parents Program	52
Certificate II in Water Industry Operations (NWP20115)	41	VCE – Victorian Certificate Of Education (VCE0000001Y11) Year 11 Rising Stars	52
Certificate III in Water Industry Operations (NWP30215)	41	Basketball and Football programs	
Certificate III in Water Industry Irrigation (NWP30415)	41	VCE/VCAL Senior	
Certificate III in Water Industry Treatment (NWP30315)	41	VCAL – (Senior) (VCALSEN001) Year 12 Allied Health Assistant	52
Hospitality and Events	42	VCAL – (Senior) (VCALSEN001) Year 12 Automotive	52
Cookery and Patisserie	43	VCAL – (Senior) (VCALSEN001) Year 12 Bricklaying	52
Certificate III In Commercial Cookery (SIT30816)	43	VCAL – (Senior) (VCALSEN001) Year 12 Carpentry	52
Certificate III In Commercial Cookery (SIT30816) Apprenticeship	43	VCAL – (Senior) (VCALSEN001) Year 12 Choices	52
Certificate III In Patisserie (SIT31016)	43	VCAL – (Senior) (VCALSEN001) Year 12 Community Services	53
Certificate IV In Commercial Cookery (SIT40516)	43	VCAL – (Senior) (VCALSEN001) Year 12 Digital Design And Graphics	53
Certificate IV In Patisserie (SIT40716)	43	VCAL – (Senior) (VCALSEN001) Year 12 EAL	53
Hospitality and Event Management	43	VCAL – (Senior) (VCALSEN001) Year 12 Early Childhood	53
Certificate II In Hospitality (Restaurant Front Of House) (SIT20316)	43	VCAL – (Senior) (VCALSEN001) Year 12 Electrical	53
Certificate III In Hospitality (SIT30616)	43	VCAL – (Senior) (VCALSEN001) Year 12 Fast Track	53
Certificate III In Hospitality (Restaurant Front Of House) (SIT30716) Apprenticeship	43	VCAL – (Senior) (VCALSEN001) Year 12 Fresh Start	53
Certificate III In Hospitality (Restaurant Front Of House) (SIT30716) Non Apprenticeship	43	VCAL – (Senior) (VCALSEN001) Year 12 Hair and Beauty	53
Certificate IV In Commercial Cookery (SIT40516) Apprenticeship	43	VCAL – (Senior) (VCALSEN001) Year 12 Nursing	53
Certificate IV In Hospitality (SIT40416)	43	VCAL – (Senior) (VCALSEN001) Year 12 Pathways	53
Diploma Of Event Management (SIT50316)	43	VCAL – (Senior) (VCALSEN001) Year 12 Plumbing	53
Information Technology	44	VCAL – (Senior) (VCALSEN001) Year 12 Rising Stars Basketball Program	54
Information Technology	45	VCAL – (Senior) (VCALSEN001) Year 12 Young Parents Program	54
Certificate II In Information, Digital Media And Technology (ICT20115)	45	English as an Additional Language (EAL)	54
PC diagnostics, troubleshooting and repair	45	Certificate I In EAL (Access) (22484VIC)	54
Certificate III In Information, Digital Media And Technology (ICT30115)	45	Certificate II in EAL (Access) (22485VIC)	54
Certificate III In Information, Digital Media And Technology (ICT30115) Traineeship	45	Certificate II In EAL (Employment) (22488VIC)	54
Certificate IV in Cyber Security (22334VIC)	45	Certificate III in EAL (Access) (22486VIC)	54
Certificate IV In Information Technology (ICT40115)	45	Certificate III In EAL (Employment) (22489VIC)	54
Certificate IV In Information Technology (ICT40115) Traineeship	45	Certificate III In EAL (Further Study) (22491VIC)	54
Certificate IV In Information Technology Support (ICT40215) Traineeship	45	Certificate IV In EAL (Employment / Professional) (22490VIC)	54
Certificate IV In Information Technology Support /	45	Certificate IV In EAL (Further Study) (22492VIC)	54
Certificate IV In Information Technology Networking (ICT40215)	45	Course In EAL (22483VIC)	54
Certificate IV In Information Technology Networking (ICT40415)	45	Course in Initial EAL (22482VIC)	54
Diploma Of Information Technology Networking (ICT50415)	45	Employment and Further Study Preparation	55
Diploma Of Software Development (ICT50715)	45	Certificate I In General Education For Adults (22236VIC)	56
Diploma Of Software Development / Certificate IV In Information Technology (ICT40115)	45	Certificate I In General Education For Adults (Introductory) (22235VIC)	56
Advanced Diploma of Cyber Security (22445VIC)	45	Certificate I in Initial Adult Literacy and Numeracy (22293VIC)	56
Advanced Diploma Of Network Security (ICT60215)	45	Certificate I In Transition Education (22301VIC)	56
Bachelor Of Information Technology (SBITD) La Trobe University partnership	45	Certificate I In Work Education (22302VIC)	56
Library and Information Services	45	Certificate II In General Education For Adults (22237VIC)	56
Certificate IV In Library And Information Services (BSB42115)	45	Certificate III In General Education For Adults (22238VIC)	56
Diploma Of Library And Information Services (BSB52115)	45		

OUR ENDORSEMENTS

Chisholm works in conjunction with many regulatory bodies, complying with all relevant legislation. Chisholm programs are conducted in line with the expectations of one or more of the following:



Our training is delivered with Victorian and Australian Government funding and oversight. This means that we work in conjunction with the state government to ensure that the education we provide suits the needs of the state and local communities.



Chisholm is a Registered Training Organisation (RTO) and provides Nationally Recognised Training (NRT). This means you can be assured that our training will provide you with a qualification that is recognised and respected across Australia.



Registration with key governing bodies such as the Australian Skills Quality Authority ensures that Chisholm complies with Australian Government requirements, as well as operating in a way that benefits students and provides them with quality education.



This is the Victorian Government organisation that regulates to ensure provision of quality learning outcomes in safe and well governed environments. We work closely with VRQA to ensure we are performing to the highest standards.



TEQSA is Australia's independent national regulator of the higher education sector. Our undergraduate and postgraduate qualifications are designed to meet the rigorous TEQSA standards that also apply to Australian universities.

Chisholm



Chisholm acknowledges that our campuses are located on the lands of the people of the Kulin Nations and recognise they are the Traditional Custodians. We pay respect to Elders past, present and future, for they hold the memories, the traditions, the culture and hopes of our nation's First Peoples.



Chisholm is committed to supporting and empowering our Aboriginal and Torres Strait Islander students and their communities through providing quality teaching and learning opportunities.

STAY IN TOUCH

Apart from our website and dedicated contact centre, you can connect with us on our social channels.

We regularly update our community and share exciting news, events and achievements.

This means you can start participating in Chisholm life even before you start your journey with us or once you've completed it.



facebook.com/chisholmInstitute



youtube.com/chisholmInst



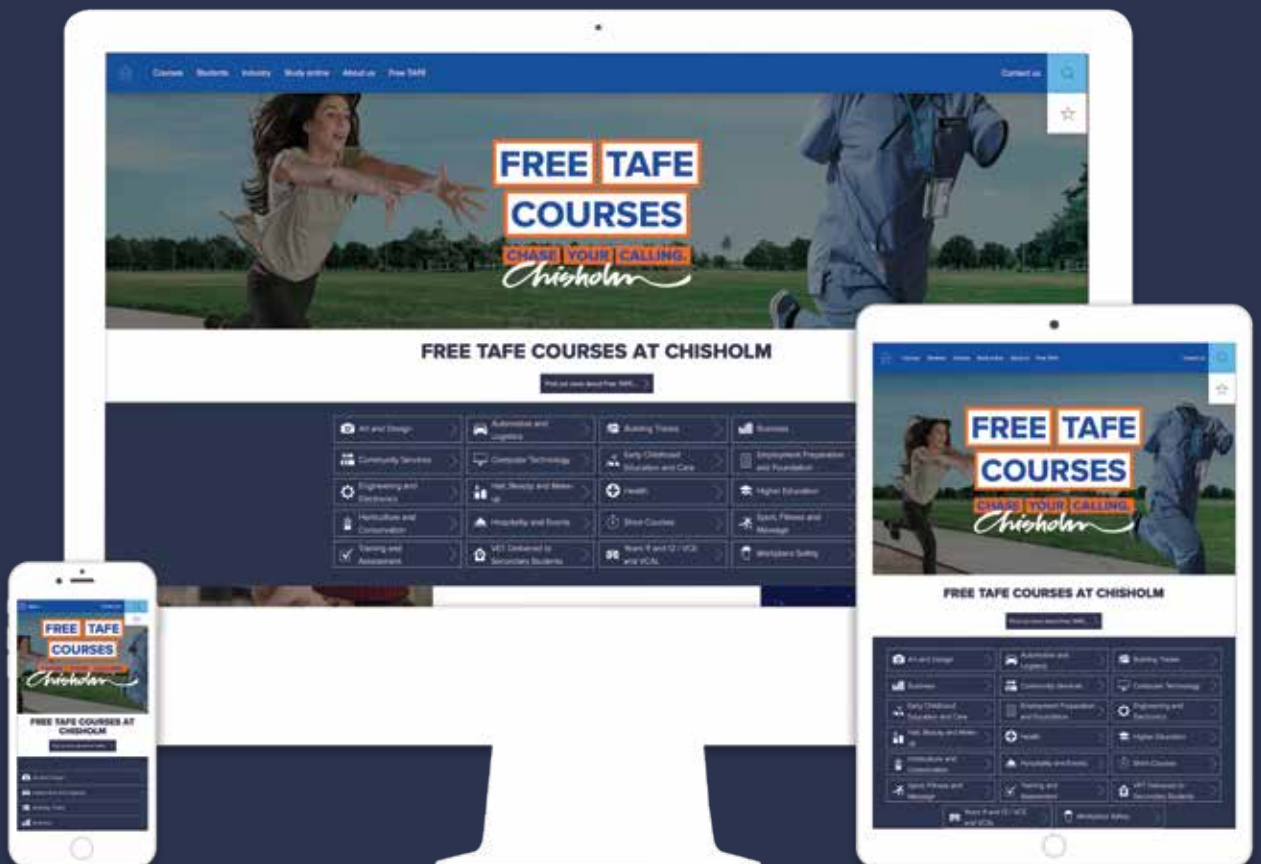
twitter.com/chisholm_Inst



instagram.com/chisholm_institute



linkedin.com/company/chisholm-institute



A man with a friendly expression is running towards the right. He is wearing a light blue button-down shirt, dark trousers, and a black flat cap. The background is a bright, sunny day in an open area with some greenery and a clear blue sky with light clouds.

FREE TAFE

COURSES

Chisholm

TAFE  VICTORIA

Gain the skills you need to launch into a career in one of Victoria's fastest growing industries with a free TAFE course at Chisholm. To find out if you're eligible, visit chisholm.edu.au/freetafe or call 1300 244 746.

Enrol now
chisholm.edu.au

CHASE YOUR CALLING.

TAFE courses to degrees

© Chisholm April 2019. 2164_1218 CRICOS No 00881F RTO No 0260 Higher Education Provider ID PRV12123. Free TAFE on selected courses only. Other fees and charges may apply. See chisholm.edu.au/freetafe. All listed course details, including fees and entry requirements, are correct at time of publication, applicable to Australian residents only and subject to change at any time and without notice. Training is delivered with Victorian and Commonwealth funding; fees are also subject to change, given individual circumstances at enrolment and changes to government funding. Financial support, concession and payment options are subject to eligibility criteria; see the Money Matters sections of this guide for more information. Course commencement is dependent on sufficient enrolments. Visit chisholm.edu.au for the latest information and pricing.